

## Product information

Xtreme is a modern crepe weave fabric made from 100% recycled polyester, diverting waste from landfill and saving virgin raw materials. Its stretch properties, coupled with inherent flame resistance, durability and non-pilling properties make Xtreme an ever popular fabric for task seating.

Xtreme is certified to the EU Ecolabel.



UK/16/005

## Technical information

### UK

#### Composition

100% Recycled Flame Retardant Polyester.  
Non metallic dyestuffs.

#### Environmental

Made from 100% recycled polyester.  
Certified to the EU Ecolabel.

#### Width

140cm minimum

#### Weight

310g/m2 ±5% (435g/lin.m ±5%)

#### \*Abrasion Resistance

10 year guarantee / 100,000 Martindale cycles (full details available)

#### Flammability

BS EN 1021 - 1:2006 (cigarette)  
BS EN 1021 - 2:2006 (match)  
BS 7176:2007 Low Hazard  
BS 5852:2006 Section 4 Ignition Source 5  
BS 7176:2007 Medium Hazard  
DIN 4102 B1  
NF - P - 92 - 507 M1  
UNI 8456 & UNI 9174 Classe 1

*Note: Flammability performance is dependent on foam used.*

#### \*Light Fastness

6 (ISO 105 - B02:2013)

#### \*Fastness to Rubbing

Wet: 4, Dry: 4 (ISO 105 - X12:2002)

#### Cleaning

Washable to 60°C. Wipe clean with a damp cloth or shampoo using proprietary upholstery shampoo.

\* Tested in accordance with BS EN 14465. Please note that seam performance is dependent on seam construction and needle and thread type. We recommend that appropriate sewing advice be taken.

**Note:** Batch to batch variations in shade may occur within commercial tolerances. We reserve the right to alter technical specifications without notice. The Unregistered Design Rights and the Copyright in all designs are the exclusive property of Camira Fabrics Limited.

### D

#### Zusammensetzung

100% Recyceltes schwerentflammabares Polyester.  
Nicht schwermetallhaltige Farbstoffe.

#### Umweltfreundlich

Hergestellt aus 100% recycelten Polyester.  
Nach Zertifikat EU Ecolabel.

#### Breite

140cm nutzbare Breite

#### Gewicht

310g/m2 ±5% (435g/ftd.M ±5%)

#### \*Scheuerfestigkeit

10 Jahre Garantie / 100,000 Martindale Scheuertouren (Details auf Anfrage)

#### Fuersicherung

BS EN 1021 - 1:2006 (Zigarettestest)  
BS EN 1021 - 2:2006 (Streichholztest)  
BS 7176:2007 Low Hazard  
BS 5852:2006 Section 4 Ignition Source 5  
BS 7176:2007 Medium Hazard  
DIN 4102 B1  
NF - P - 92 - 507 M1  
UNI 8456 & UNI 9174 Classe 1

*Bemerkung: Schwerentflammbarkeit hängt von verwendetem Schaum ab*

#### \*Lichtechtheit

6 (ISO 105 - B02:2013)

#### \*Reibechtheit

Nass: 4, Trocken: 4 (ISO 105 - X12:2002)

#### Reinigung

Waschbar bis 60°C. Regelmässig staubsaugen. Dazu mit einem feuchten Tuch abwischen, oder mit einem speziellen Polsterschaum behandeln.

\* Wurde nach BS EN 14465 getestet. Eine optimale Nahtausreisfestigkeit hängt von der Nahtfähe, der verwendeten Nadel und dem Näh-Garn ab. Wir empfehlen daher Nähversuche durchzuführen.

**Wichtig:** Handelsübliche Farbabweichungen können auftreten und berechtigen nicht zur Reklamation. Wir behalten uns die Änderung technischer Spezifikationen vor. Die registrierten und nicht registrierten Urheberrechte der Dessinierungen sind ausschliessliches Eigentum der Camira Fabrics Limited.

### Contact

UK Head Office: +44 (0)1924 490491

Germany: +49 7031 60 84 30

Scandinavia: +45 32 55 20 01

France/Benelux: +32 56 227 266

USA: +1 317 484 0305

China: + 86 (0) 21 6133 1812

[www.camirafabrics.com](http://www.camirafabrics.com)



### ES

#### Composició

100% Resistente al fuego Poliéster Reciclado.  
Tintes no metálicos.

#### Ambiental

Hecho de 100% de poliéster reciclado.  
Certificado con EU Flower.

#### Ancho

140cm mínimo

#### Peso

310g/m2 ±5% (435g/lin.m ±5%)

#### \*Resistencia a la abrasión

Garantía de uso 10 años / 100,000 Martindale ciclos (más información disponible bajo consulta)

#### Inflamabilidad

BS EN 1021 - 1:2006 (cigarillo)  
BS EN 1021 - 2:2006 (cerilla)  
BS 7176:2007 Low Hazard  
BS 5852:2006 Section 4 Ignition Source 5  
BS 7176:2007 Medium Hazard  
DIN 4102 B1  
NF - P - 92 - 507 M1  
UNI 8456 & UNI 9174 Classe 1

*Condiciones ignifugas dependientes del tipo de foam utilizado.*

#### \*Solidez a la luz

6 (ISO 105 - B02:2013)

#### \*Solidez al rozamiento

Húmedo: 4, Seco: 4 (ISO 105 - X12:2002)

#### Limpieza

Lavable hasta 60°C. Limpiar con aspiradora frecuentemente. Bien lavar con un paño húmedo o con un champú apropiado para tapicería.

\* Testé selon la norme BS EN 14465. Veuillez noter que la performance du joint dépend de sa construction ainsi que de l'aiguille et du type de fil utilisés.

**Remarque:** une variation de couleurs peut provenir (commerciallement tolérable). Nous réservons le droit de changer les spécifications techniques sans préavis. Les Droits de Conception non-enregistrés et les droits d'auteur de tous les motifs sont la propriétés exclusives de Camira Fabrics Limited.

**Nota:** las variaciones de lote a lote en la sombra se puede producir dentro de tolerancias comerciales. Nos reservamos el derecho a efectuar modificaciones técnicas sin previo aviso. Los derechos sobre los diseños no registrados y los derechos de autor en todos los diseños son propiedad exclusiva de Camira Fabrics Limited.

# camira

style with substance

[www.camirafabrics.com](http://www.camirafabrics.com)

# Xtreme



Task seating



Cigarette & Match



Crib 5 / M1 / B1



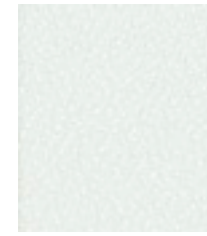
Environmental



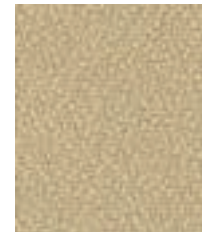
Year guarantee  
8 hour use

Please note that we do not recommend selection of fabric ranges and colours via this method. Colours can vary from screen to screen and may not a true representation of the actual colour. Swatch cards or samples can be provided on request for your consideration.

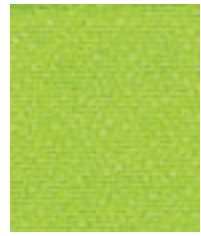
Please note that we do not recommend selection of fabric ranges and colours via this method.  
Colours can vary from screen to screen and may not a true representation of the actual colour.  
Swatch cards or samples can be provided on request for your consideration.



**Adobo**  
YS165



**Manado**  
YS166



**Madura**  
YS156



**Apple**  
YS096



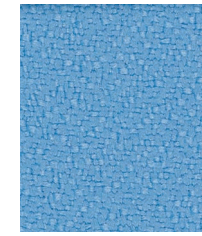
**Orchilla**  
YS167



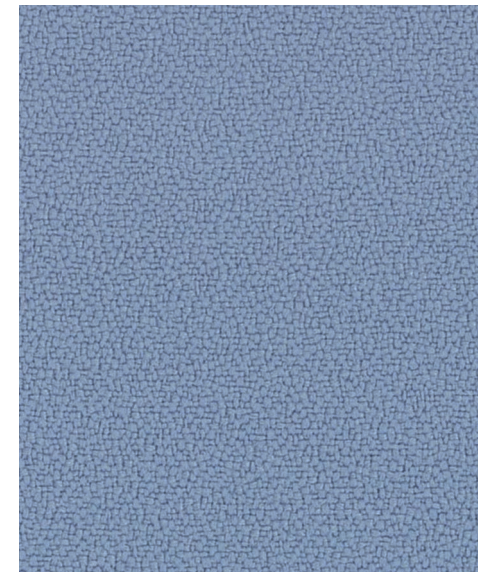
**Rum**  
YS173



**Arecibo**  
YS174



**Marianna**  
YS157



**Steel**  
YS095



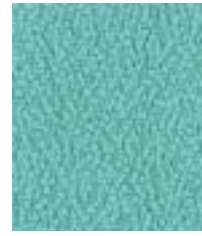
**Aruba**  
YS108



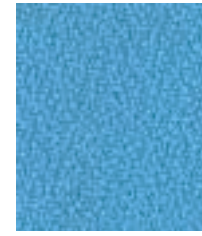
**Solano**  
YS072



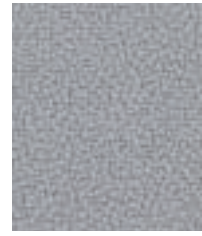
**Tortuga**  
YS168



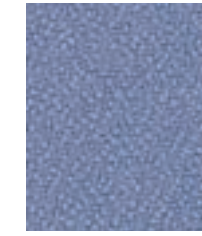
**Campeche**  
YS074



**Parasol**  
YS073



**Slip**  
YS094



**Anguilla**  
YS169



**Sandstorm**  
YS071



**Bridgetown**  
YS102



**Belize**  
YS105



**Lobster**  
YS076



**Lombok**  
YS159



**Tonga**  
YS160



**Buru**  
YS170



**Blizzard**  
YS081



**Bluebell**  
YS097



**Martinique**  
YS004



**Mauve**  
YS069



**Nougat**  
YS091



**Diablo**  
YS101



**Panama**  
YS079



**Jamaica**  
YS027



**Windjammer**  
YS047



**Montserrat**  
YS011



**Osumi**  
YS171



**Krabi**  
YS141



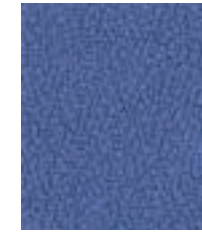
**Honeymoon**  
YS035



**Scuba**  
YS082



**Curacao**  
YS005



**Bluefield**  
YS021



**Nicobar**  
YS158



**Calypso**  
YS106



**Tokara**  
YS136



**Appledore**  
YS077



**Twister**  
YS083



**Sombrero**  
YS046



**Ocean**  
YS100



**Navassa**  
YS162



**Cayman**  
YS024



**Andaman**  
YS144



**Bounty**  
YS086



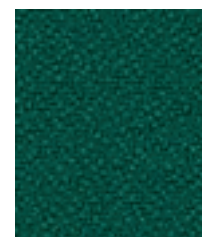
**Tarot**  
YS084



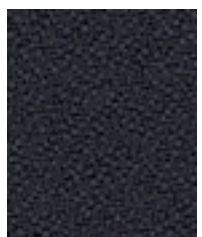
**Tobago**  
YS030



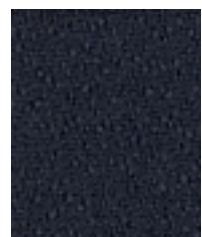
**Taboo**  
YS045



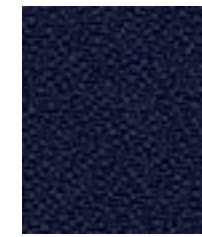
**Flores**  
YS161



**Bonaire**  
YS172



**Padang**  
YS145



**Leeward**  
YS164



**Arawak**  
YS016



**Costa**  
YS026



**Havana**  
YS009