

## Product information

Urban takes its inspiration from the street. It has a sharply styled architectural look with clean lines forming a structured geometric grid pattern reminiscent of a downtown urban cityscape. Lightly textured, there's an almost industrial metallic sheen to the freshly themed colourways which work with both Xtreme and Lucia.

Urban is certified to the EU Ecolabel.



## Contact

UK Head Office:	+44 (0)1924 490491
Germany:	+49 7031 60 84 30
Scandinavia:	+45 32 55 20 01
France/Benelux:	+32 56 227 266
USA:	+1 317 484 0305
China:	+ 86 (0) 21 6133 1812

[www.camirafabrics.com](http://www.camirafabrics.com)



## Technical information

### UK

#### Composition

100% Recycled Flame Retardant Polyester.  
Non metallic dyestuffs

#### Environmental

Made from 100% recycled polyester.  
Certified to the EU Ecolabel.

#### Width

140cm minimum

#### Weight

320g/m<sup>2</sup> ±5% (450g/lin.m ±5%)

#### \*Abrasion Resistance

5 year guarantee / 100,000 Martindale cycles  
(full details available)

#### Flammability

BS EN 1021 - 1:2006 (cigarette)  
BS EN 1021 - 2:2006 (match)  
BS 7176:2007 Low Hazard  
BS 5852:2006 Section 4 Ignition Source 5  
BS 7176:2007 Medium Hazard  
DIN 4102 B1  
NF D 60-013 : 2006  
NF - P - 92 - 507 M1  
UNI 8456 & UNI 9174 Classe 1  
*Note: Flammability performance is dependent on foam used.*

#### \*Light Fastness

6 (ISO 105 - B02:2013)

#### \*Fastness to Rubbing

Wet: 4, Dry: 4 (ISO 105 - X12:2002)

#### Cleaning

Washable to 60°C. Wipe clean with a damp cloth or shampoo using proprietary upholstery shampoo.

\* Tested in accordance with BS EN 14465. Please note that seam performance is dependent on seam construction and needle and thread type. We recommend that appropriate sewing advice be taken.

**Note:** Batch to batch variations in shade may occur within commercial tolerances. We reserve the right to alter technical specifications without notice. The Unregistered Design Rights and the Copyright in all designs are the exclusive property of Camira Fabrics Limited.

### D

#### Zusammensetzung

100% Recyceltes schwerentflammbares Polyester.  
Nicht schwermetallhaltige Farbstoffe

#### Umweltfreundlich

Hergestellt aus 100% recycelten Polyester.  
Nach Zertifikat EU Ecolabel.

#### Breite

140cm nutzbare Breite

#### Gewicht

320g/m<sup>2</sup> ±5% (450g/ldf.M ±5%)

#### \*Scheuerfestigkeit

5 Jahre Garantie / 100,000 Martindale Scheuertouren  
(Details auf Anfrage)

#### Feuersicherung

BS EN 1021 - 1:2006 (Zigarettentest)  
BS EN 1021 - 2:2006 (Streichholztest)  
BS 7176:2007 Low Hazard  
BS 5852:2006 Section 4 Ignition Source 5  
BS 7176:2007 Medium Hazard  
DIN 4102 B1  
NF D 60-013 : 2006  
NF - P - 92 - 507 M1  
UNI 8456 & UNI 9174 Classe 1  
*Bemerkung: Schwerentflammbarkeit hängt von verwendetem Schaum ab*

#### \*Lichtechtheit

6 (ISO 105 - B02:2013)

#### \*Reibechtheit

Nass: 4, Trocken: 4 (ISO 105 - X12:2002)

#### Reinigung

Waschbar bis 60°C. Regelmässige staubsaugen. Dazu mit einem feuchten Tuch abwischen, oder mit einem speziellen Polsterschaum behandeln.

\* Wurde nach BS EN 14465 getestet. Eine optimale Nahtausreissfestigkeit hängt von der Nähfähigkeit, der verwendeten Nadel und dem Näh-Garn ab. Wir empfehlen daher Nähversuche durchzuführen.

**Wichtig:** Handelsübliche Farbabweichungen können auftreten und berechtigen nicht zur Reklamation. Wir behalten uns die Änderung technischer Spezifikationen vor. Die registrierten und nicht registrierten Urheberrechte der Dessinierungen sind ausschliessliches Eigentum der Camira Fabrics Limited.

### F

#### Composition

100% Polyester retardateur de flamme recyclé. Teintures non métalliques

#### Écologique

Fabriqué d'un polyester 100% recyclé avec le certificat EU Ecolabel.

#### Largeur

140cm minimum

#### Poids

320g/m<sup>2</sup> ±5% (450g/m.l ±5%)

#### \*Résistance à l'abrasion

Garantie de 5 ans / 100,000 Martindale tours  
(renseignements complémentaires disponibles)

#### Flammabilité

BS EN 1021 - 1:2006 (cigarette)  
BS EN 1021 - 2:2006 (allumette)  
BS 7176:2007 Low Hazard  
BS 5852:2006 Section 4 Ignition Source 5  
BS 7176:2007 Medium Hazard  
DIN 4102 B1  
NF D 60-013 : 2006  
NF - P - 92 - 507 M1  
UNI 8456 & UNI 9174 Classe 1  
*Notez: Réaction au feu dépend de la mousse utilisée.*

#### \*Solidité à la lumière

6 (ISO 105 - B02:2013)

#### \*Solidité au Frottement

Mouillé: 4, Sec: 4 (ISO 105 - X12:2002)

#### Nettoyage

Lavable jusqu'à 60°C. Aspirer régulièrement. Essuyer avec une étoffe humide ou nettoyer à l'aide d'un produit approprié pour tissus d'ameublement.

\* Testé selon la norme BS EN 14465. Veuillez noter que la performance du joint dépend de sa construction ainsi que de l'aiguille et du type de fil utilisés.

**Remarque:** une variation de couleurs peut provenir (commerciallement tolérable). Nous réservons le droit de changer les spécifications techniques sans préavis. Les Droits de Conception non-enregistrés et les droits d'auteur de tous les motifs sont la propriétés exclusives de Camira Fabrics Limited.

### ES

#### Composición

100% Poliéster resistente al fuego Reciclado. Tintes no metálicos

#### Ambiental

Hecho de 100% de poliéster reciclado.  
Certificado con EU Flower.

#### Ancho

140cm mínimo

#### Peso

320g/m<sup>2</sup> ±5% (450g/lin.m ±5%)

#### \*Resistencia a la abrasión

Garantía de uso 5 años / 100,000 Martindale ciclos  
(más información disponible bajo consulta)

#### Inflamabilidad

BS EN 1021 - 1:2006 (cigarillo)  
BS EN 1021 - 2:2006 (cerilla)  
BS 7176:2007 Low Hazard  
BS 5852:2006 Section 4 Ignition Source 5  
BS 7176:2007 Medium Hazard  
DIN 4102 B1  
NF D 60-013 : 2006  
NF - P - 92 - 507 M1  
UNI 8456 & UNI 9174 Classe 1  
*Condiciones ignifugas dependientes del tipo de foam utilizado.*

#### \*Solidez a la luz

6 (ISO 105 - B02:2013)

#### \*Solidez al rozamiento

Húmedo: 4, Seco: 4 (ISO 105 - X12:2002)

#### Limpieza

Lavable hasta 60°C. Limpiar con aspiradora frecuentemente. Bien lavar con un paño húmedo o con un champú apropiado para tapicería.

\* Probado de acuerdo con la norma BS EN 14465. Tenga en cuenta que el rendimiento de la costura depende de la construcción de la costura, además de la aguja y del tipo de rosca. Le recomendamos que se aconsejen para coser la costura.

**Nota:** las variaciones de lote a lote en la sombra se puede producir dentro de tolerancias comerciales. Nos reservamos el derecho a efectuar modificaciones técnicas sin previo aviso. Los derechos sobre los diseños no registrados y los derechos de autor en todos los diseños son propiedad exclusiva de Camira Fabrics Limited.

# camira

[www.camirafabrics.com](http://www.camirafabrics.com)

style with substance

# Urban



Task seating



Cigarette & Match



Crib 5 / M1 / B1



Environmental

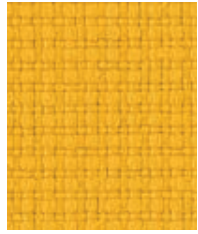


Year guarantee

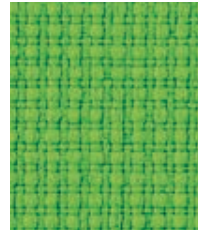
**Urban**

[www.camirafabrics.com/samples](http://www.camirafabrics.com/samples)

Please note that we do not recommend selection of fabric ranges and colours via this method. Colours can vary from screen to screen and may not a true representation of the actual colour. Swatch cards or samples can be provided on request for your consideration.



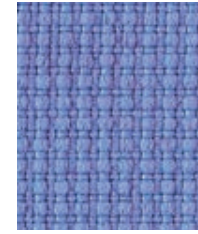
**Avenue**  
YN148



**Uptown**  
YN200



**District**  
YN212



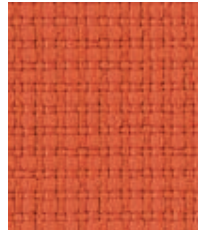
**Metropolis**  
YN097



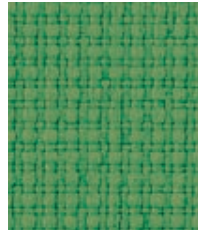
**Living**  
YN108



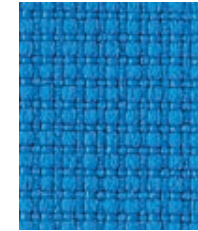
**Precinct**  
YN027



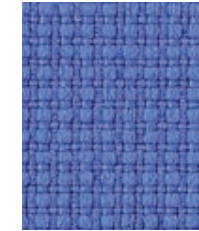
**Highrise**  
YN076



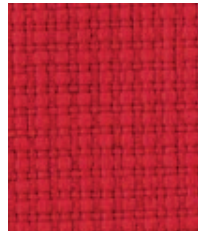
**Suburbia**  
YN159



**Penthouse**  
YN202



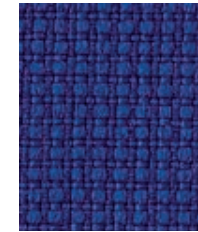
**Ringroad**  
YN208



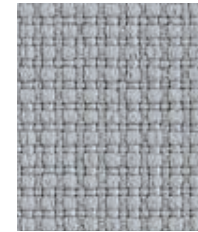
**Congestion**  
YN079



**Downtown**  
YN190



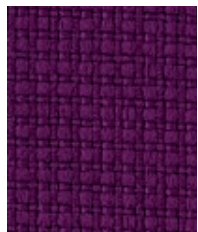
**Conurbation**  
YN082



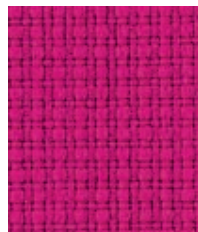
**Sidewalk**  
YN094



**Curb**  
YN206



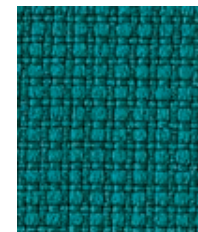
**Graffiti**  
YN204



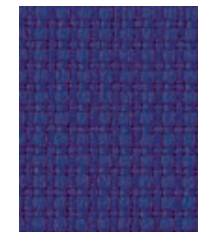
**Cosmopolitan**  
YN203



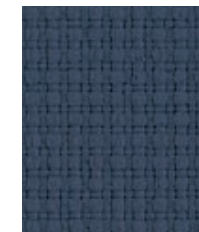
**Bench**  
YN091



**Boulevard**  
YN160



**Streetsmart**  
YN209



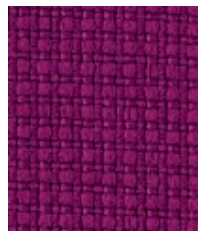
**Junction**  
YN083



**Square**  
YN207



**Intersection**  
YN205



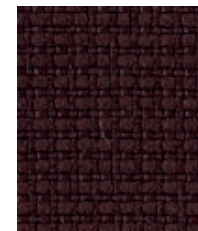
**Freeway**  
YN211



**Loft**  
YN201



**Bedsit**  
YN158



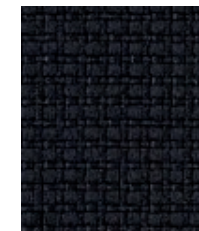
**Inncity**  
YN086



**Nightowl**  
YN210



**Underground**  
YN145



**Subway**  
YN009