

Product information

Nexus is a sleek and stylish technical knit, offering two dimensional stretch and comfort cushioning, in a pin prick dot matrix design effect. It's suitable for both seating and vertical surfaces, coming in 173cm width yet with a high Martindale abrasion rating of 100,000 cycles.

Contact

UK Head Office:	+44 (0)1924 490491
Germany:	+49 7031 60 84 30
Scandinavia:	+45 32 55 20 01
France/Benelux:	+32 56 227 266
USA:	+1 317 484 0305
China:	+ 86 (0) 21 6133 1812

www.camirafabrics.com



Technical information

UK

Composition
100% Polyester

Width
173cm minimum

Weight
305g/m2 ±5% (530g/lin.m ±5%)

***Abrasion Resistance**
5 year guarantee / 100,000 Martindale cycles (full details available)

Flammability
BS 476 Part 7 Class 1
BS EN 1021 - 1:2006 (cigarette)
BS EN 1021 - 2:2006 (match)
BS 7176:2007 Low Hazard
UNI 9175 (1987) - UNI 9175/FA1 (1994)
Note: Flammability performance is dependent on foam used.

***Light Fastness**
5 (ISO 105 - B02:2013)

***Fastness to Rubbing**
Wet: 4, Dry: 4 (ISO 105 - X12:2002)

Cleaning
Vacuum regularly. Wipe clean with a damp cloth.

* Tested in accordance with BS 2543:1995/2004. Please note that seam performance is dependent on seam construction and needle and thread type. We recommend that appropriate sewing advice be taken.

Note: Batch to batch variations in shade may occur within commercial tolerances. We reserve the right to alter technical specifications without notice. The Unregistered Design Rights and the Copyright in all designs are the exclusive property of Camira Fabrics Limited.

D

Zusammensetzung
100% Polyester

Breite
173cm nutzbare Breite

Gewicht
305g/m2 ±5% (530g/ftd.M ±5%)

***Scheuerfestigkeit**
5 Jahre Garantie / 100,000 Martindale Scheuertouren (Details auf Anfrage)

Feuersicherung
BS 476 Part 7 Class 1
BS EN 1021 - 1:2006 (Zigarettentest)
BS EN 1021 - 2:2006 (Streichholztest)
BS 7176:2007 Low Hazard
UNI 9175 (1987) - UNI 9175/FA1 (1994)
Bemerkung: Schwerentflammbarkeit hängt von verwendetem Schaum ab.

***Lichtechtheit**
5 (ISO 105 - B02:2013)

***Reibechtheit**
Nass: 4, Trocken: 4 (ISO 105 - X12:2002)

Reinigung
Regelmässig absaugen. Dazu mit einem feuchten Tuch abwischen.

* Wurde nach BS 2543:1995/2004 getestet. Eine optimale Nahtausreissfestigkeit hängt von der Nahtfahne, der verwendeten Nadel und dem Näh-Garn ab. Wir empfehlen daher Nähversuche durchzuführen.

Wichtig: Handelsübliche Farbabweichungen können auftreten und berechtigen nicht zur Reklamation. Wir behalten uns die Änderung technischer Spezifikationen vor. Die registrierten und nicht registrierten Urheberrechte der Dessinierungen sind ausschliessliches Eigentum der Camira Fabrics Limited.

F

Composition
100% Polyester

Largeur
173cm minimum

Poids
305g/m2 ±5% (530g/m.l ±5%)

***Résistance à l'abrasion**
Garantie de 5 ans / 100,000 Martindale tours (renseignements complémentaires disponibles)

Flammabilité
BS 476 Part 7 Class 1
BS EN 1021 - 1:2006 (cigarette)
BS EN 1021 - 2:2006 (allumette)
BS 7176:2007 Low Hazard
UNI 9175 (1987) - UNI 9175/FA1 (1994)
Notez: Réaction au feu dépend de la mousse utilisée.

***Solidité à la lumière**
5 (ISO 105 - B02:2013)

***Solidité au Frottement**
Mouillé: 4, Sec: 4 (ISO 105 - X12:2002)

Nettoyage
Aspirer régulièrement. Essuyer avec un tissu humide.

* Testé selon la norme BS 2543: 1995/2004. Veuillez noter que la performance du joint dépend de sa construction ainsi que de l'aiguille et du type de fil utilisés.

Remarque: une variation de couleurs peut provenir (commerciallement tolérable). Nous réservons le droit de changer les spécifications techniques sans préavis. Les Droits de Conception non-enregistrés et les droits d'auteur de tous les motifs sont la propriétés exclusives de Camira Fabrics Limited.

ES

Composición
100% Polyester

Ancho
173cm mínimo

Peso
305g/m2 ±5% (530g/lin.m ±5%)

***Resistencia a la abrasión**
Garantía de uso 5 años / 100,000 Martindale ciclos (más información disponible bajo consulta)

Inflamabilidad
BS 476 Part 7 Class 1
BS EN 1021 - 1:2006 (cigarillo)
BS EN 1021 - 2:2006 (cerilla)
BS 7176:2007 Low Hazard
UNI 9175 (1987) - UNI 9175/FA1 (1994)
Condiciones ignifugas dependientes del tipo de foam utilizado.

***Solidez a la luz**
5 (ISO 105 - B02:2013)

***Solidez al rozamiento**
Húmedo: 4, Seco: 4 (ISO 105 - X12:2002)

Limpieza
Limpiar con aspirador con regularidad. Bien lavar con un paño húmedo.

* Probado de acuerdo con la norma BS 2543:1995 / 2004. Tenga en cuenta que el rendimiento de la costura depende de la construcción de la costura, además de la aguja y del tipo de rosca. Le recomendamos que se aconsejen para coser la costura.

Nota: las variaciones de lote a lote en la sombra se puede producir dentro de tolerancias comerciales. Nos reservamos el derecho a efectuar modificaciones técnicas sin previo aviso. Los derechos sobre los diseños no registrados y los derechos de autor en todos los diseños son propiedad exclusiva de Camira Fabrics Limited.

camira

style with substance

www.camirafabrics.com

Nexus



Task seating



Panels



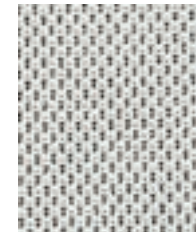
Cigarette & Match



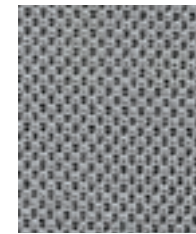
Year guarantee

Please note that we do not recommend selection of fabric ranges and colours via this method. Colours can vary from screen to screen and may not a true representation of the actual colour. Swatch cards or samples can be provided on request for your consideration.

Please note that we do not recommend selection of fabric ranges and colours via this method. Colours can vary from screen to screen and may not a true representation of the actual colour. Swatch cards or samples can be provided on request for your consideration.



Chalk
UNY12



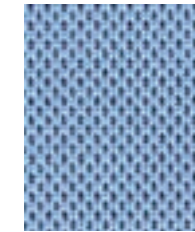
Storm
UNY07



Limestone
UNY02



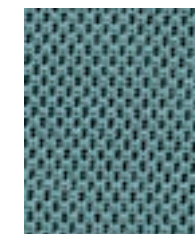
Kiwi
UNY05



Sky
UNY06



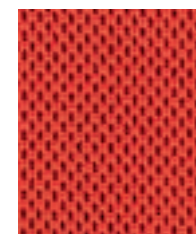
Olive
UNY09



Petrol
UNY10



Pewter
UNY01



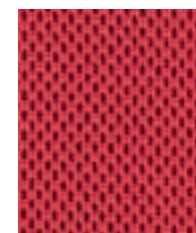
Berry
UNY04



Denim
UNY08



Graphite
UNY11



Russian
UNY16



Pacific
UNY03



Oceanic
UNY15



Black
UNY13