

Manhattan - Product information

Manhattan is a dobby weave fabric with a modern, geometric texture mimicing the architectural grid system within an urban landscape. Made from 100% recycled polyester, the fabric has in-built stretch for easy upholsterability. The global colour palette follows the colour blocking and modular fashion trend.

Manhattan is certified to the EU Ecolabel.



UK/16/005

Technical information

UK

Composition

100% Recycled Polyester.
Non metallic dyestuffs

Environmental

Made from 100% recycled polyester.
Certified to the EU Ecolabel.

Width

140cm minimum

Weight

290g/m² ±5% (405g/lin.m ±5%)

Abrasion Resistance

5 year guarantee / 50,000 Martindale cycles (full details available)

Flammability

BS EN 1021 - 1:2014 (cigarette)
BS EN 1021 - 2:2014 (match)
BS 7176:2007 Low Hazard

UNI 9175 Class 1 IM

Note: Flammability performance is dependent on foam used.

Light Fastness

6 (ISO 105 - B02:2014)

Fastness to Rubbing

Wet: 4, Dry: 4 (ISO 105 - X12:2002)

Cleaning

Washable to 60°C. Wipe clean with a damp cloth or shampoo using proprietary upholstery shampoo.

Please note that seam performance is dependent on seam construction and needle and thread type. We recommend that appropriate sewing advice be taken.

Note: Batch to batch variations in shade may occur within commercial tolerances. We reserve the right to alter technical specifications without notice. The Unregistered Design Rights and the Copyright in all designs are the exclusive property of Camira Fabrics Limited.

D

Zusammensetzung

100% Recyceltes Polyester.
Nicht schwermetallhaltige Farbstoffe

Umweltfreundlich

Hergestellt aus 100% recycelten Polyester.
Nach Zertifikat EU Ecolabel.

Breite

140cm nutzbare Breite

Gewicht

290g/m² ±5% (405g/ldf.M ±5%)

Scheuerfestigkeit

5 Jahre Garantie / 50,000 Martindale Scheuertouren (Details auf Anfrage)

Feuersicherung

BS EN 1021 - 1:2014 (Zigarettentest)
BS EN 1021 - 2:2014 (Streichholztest)
BS 7176:2007 Low Hazard

UNI 9175 Class 1 IM

Bemerkung: Schwerentflammbarkeit hängt von verwendetem Schaum ab.

Lichtechtheit

6 (ISO 105 - B02:2014)

Reibecktheit

Nass: 4, Trocken: 4 (ISO 105 - X12:2002)

Reinigung

Waschbar bis 60°C. Regelmässig staubsaugen. Dazu mit einem feuchten Tuch abwischen, oder mit einem speziellen Polsterschaum behandeln.

Eine optimale Nahtausreissfestigkeit hängt von der Nahtfahne, der verwendeten Nadel und dem Näh-Garn ab. Wir empfehlen daher Nähversuche durchzuführen.

Wichtig: Handelsübliche Farbabweichungen können auftreten und berechtigen nicht zur Reklamation. Wir behalten uns die Änderung technischer Spezifikationen vor. Die registrierten und nicht registrierten Urheberrechte der Dessinierungen sind ausschliessliches Eigentum der Camira Fabrics Limited.

Contact

UK Head Office:	+44 (0)1924 490491
Germany:	+49 7031 60 84 30
Scandinavia:	+45 32 55 20 01
France/Benelux:	+32 56 227 266
USA:	+1 616 288 0655
China:	+86 (0) 21 6133 1812

www.camirafabrics.com



F

Composition

100% Polyester Recyclé.
Teintures non métalliques

Écologique

Fabriqué d'un polyester 100% recycle avec le certificat EU Ecolabel.

Largeur

140cm minimum

Poids

290g/m² ±5% (405g/m.l ±5%)

Résistance à l'abrasion

Garantie de 5 ans / 50,000 Martindale tours (renseignements complémentaires disponibles)

Flammabilité

BS EN 1021 - 1:2014 (cigarette)
BS EN 1021 - 2:2014 (allumette)
BS 7176:2007 Low Hazard

UNI 9175 Class 1 IM

Notez: Réaction au feu dépend de la mousse utilisée.

Solidité à la lumière

6 (ISO 105 - B02:2014)

Solidité au Frottement

Mouillé: 4, Sec: 4 (ISO 105 - X12:2002)

Nettoyage

Lavable jusqu'à 60°C. Aspirer régulièrement. Essuyer avec une étoffe humide ou nettoyer à l'aide d'un produit approprié pour tissus d'ameublement.

Veillez noter que la performance du joint dépend de sa construction ainsi que de l'aiguille et du type de fil utilisés.

Remarque: une variation de couleurs peut provenir (commerciallement tolérable). Nous réservons le droit de changer les spécifications techniques sans préavis. Les Droits de Conception non-enregistrés et les droits d'auteur de tous les motifs sont la propriétés exclusives de Camira Fabrics Limited.

ES

Composición

100% Poliéster Reciclado.
Tintes no metálicos

Ambiental

Hecho de 100% de poliéster reciclado.
Certificado con EU Flower.

Ancho

140cm mínimo

Peso

290g/m² ±5% (405g/lin.m ±5%)

Resistencia a la abrasión

Garantía de uso 5 años / 50,000 Martindale ciclos (más información disponible bajo consulta)

Inflamabilidad

BS EN 1021 - 1:2014 (cigarillo)
BS EN 1021 - 2:2014 (cerilla)
BS 7176:2007 Low Hazard

UNI 9175 Class 1 IM

Condiciones ignífugas dependientes del tipo de foam utilizado.

Solidez a la luz

6 (ISO 105 - B02:2014)

Solidez al rozamiento

Húmedo: 4, Seco: 4 (ISO 105 - X12:2002)

Limpieza

Lavable hasta 60°C. Limpiar con aspiradora frecuentemente. Bien lavar con un paño húmedo o con un champú apropiado para tapicería.

Tenga en cuenta que el rendimiento de la costura depende de la construcción de la costura, además de la aguja y del tipo de rosca. Le recomendamos que se aconsejen para coser la costura.

Nota: las variaciones de lote a lote en la sombra se puede producir dentro de tolerancias comerciales. Nos reservamos el derecho a efectuar modificaciones técnicas sin previo aviso. Los derechos sobre los diseños no registrados y los derechos de autor en todos los diseños son propiedad exclusiva de Camira Fabrics Limited.

camira

style with substance

www.camirafabrics.com

Manhattan



Task seating



Cigarette & Match



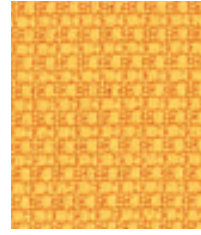
Environmental



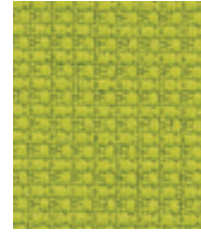
Year guarantee

Please note that we do not recommend selection of fabric ranges and colours via this method. Colours can vary from screen to screen and may not a true representation of the actual colour. Swatch cards or samples can be provided on request for your consideration.

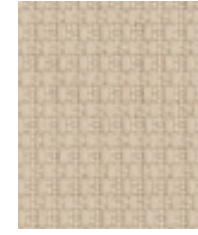
Please note that we do not recommend selection of fabric ranges and colours via this method. Colours can vary from screen to screen and may not be a true representation of the actual colour. Swatch cards or samples can be provided on request for your consideration.



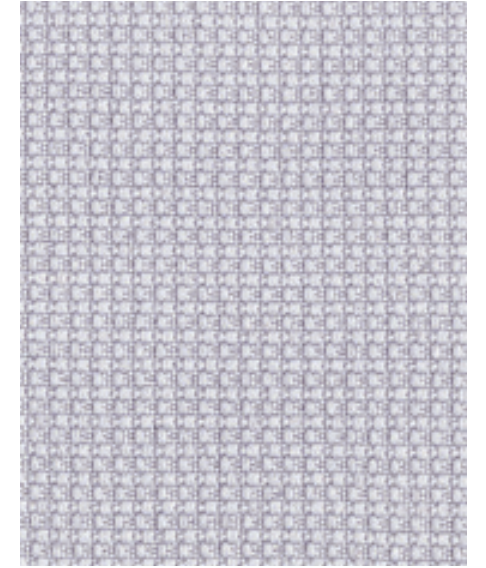
Murphy
YI110



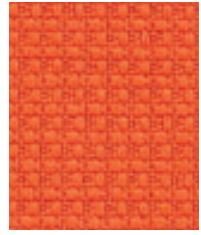
Park
YI188



Bronx
YI364



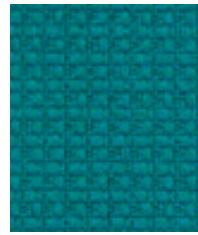
Varick
YI173



Lexington
YI113



Ellis
YI365



Leroy
YI160



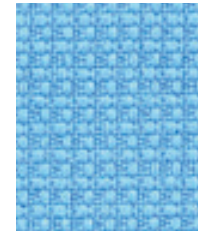
Jackson
YI385



Houston
YI380



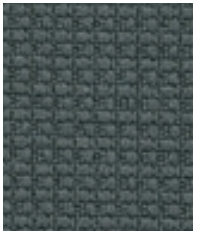
Penn
YI384



Watts
YI157



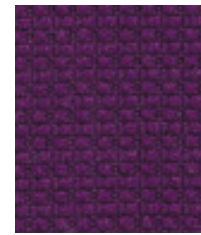
Saks
YI389



Broadway
YI363



Hudson
YI362



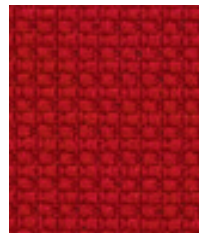
Sheridan
YI204



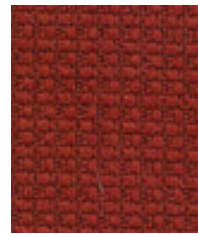
Astor
YI361



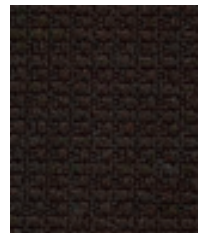
Staten
YI386



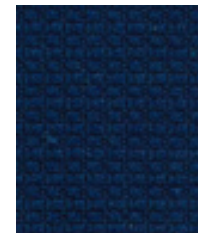
Monroe
YI106



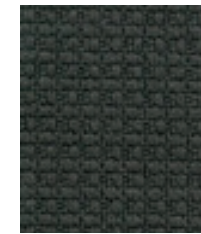
Soho
YI381



Capital
YI086



Rubin
YI026



Chrysler
YI390



Macys
YI009