

Product information

Intervene fabrics provide proven long-term performance in the most demanding public spaces - in reception areas, doctors' and hospital waiting areas, dining rooms, staff accommodation, nursing and residential homes, and in student halls of residence, lecture theatres and student unions.

The Intervene collection comprises two recycled polyester fabrics, Plain and Texture, both powered by Camira TriOnyx - a soft-effect finish which ensures fabrics are: 1) stain repellent and waterproof, 2) permanently antimicrobial using Maedical, and 3) flame retardant to the highest European standards.

TriOnyx **mædical**
I-LINK

Technical information

UK	D	F	ES
Composition 100% Recycled Polyester face with TriOnyx flocked performance backcoat.	Zusammensetzung 100% recycelte, Polyesteroberfläche, Rückseite beschichtet mit TriOnyx.	Composition 100% polyester non-feu recyclé contrecolle avec un TriOnyx flock coating haute performance.	Composición Superficie 100% Poliester reciclado ignífugo base hecha con TriOnyx sellado haute performance.
Width 140cm minimum	Breite 140cm nutzbare Breite	Largeur 140cm minimum	Ancho 140cm mínimo
Weight Plain: 465g/m ² ±5% (650g/lin.m ±5%) Texture: 510g/m ² ±5% (715g/lin.m ±5%)	Gewicht Plain: 465g/m ² ±5% (650g/lfd.M ±5%) Texture: 510g/m ² ±5% (715g/lfd.M ±5%)	Poids Plain: 465g/m ² ±5% (650g/m.l ±5%) Texture: 510g/m ² ±5% (715g/m.l ±5%)	Peso Plain: 465g/m ² ±5% (650g/lin.m ±5%) Texture: 510g/m ² ±5% (715g/lin.m ±5%)
Abrasion Resistance 5 year guarantee / 100,000 Martindale cycles (full details available)	Scheuerfestigkeit 5 Jahre Garantie / 100,000 Martindale Scheuertouren (Details auf Anfrage)	Résistance à l'abrasion Garantie de 5 ans / 100,000 Martindale tours (renseignements complémentaires disponibles)	Resistencia a la abrasión Garantía de uso 5 años / 100,000 Martindale ciclos (más información disponible bajo consulta)
Flammability BS EN 1021 - 1:2014 (cigarette) BS EN 1021 - 2:2014 (match) BS 7176:2007 Low Hazard BS 5852:2006 Section 4 Ignition Source 5 BS 7176:2007 Medium Hazard UNI 9175 Classe 1 IM in conjunction with foam (FR PU 35Kg/m ³) <i>Note: Flammability performance is dependent on foam used.</i>	Feuersicherung BS EN 1021 - 1:2014 (Zigarettentest) BS EN 1021 - 2:2014 (Streichholztest) BS 7176:2007 Low Hazard BS 5852:2006 Section 4 Ignition Source 5 BS 7176:2007 Medium Hazard UNI 9175 Classe 1 IM verwendet mit Schaum (FR PU 35Kg/m ³) <i>Bemerkung: Schwereentflammbarkeit hängt von verwendetem Schaum ab.</i>	Flammabilité BS EN 1021 - 1:2014 (cigarette) BS EN 1021 - 2:2014 (allumette) BS 7176:2007 Low Hazard BS 5852:2006 Section 4 Ignition Source 5 BS 7176:2007 Medium Hazard UNI 9175 Classe 1 IM avec une mousse (FR PU 35Kg/m ³) <i>Notez: Réaction au feu dépend de la mousse utilisée.</i>	Inflamabilidad BS EN 1021 - 1:2014 (cigarillo) BS EN 1021 - 2:2014 (cerilla) BS 7176:2007 Low Hazard BS 5852:2006 Section 4 Ignition Source 5 BS 7176:2007 Medium Hazard UNI 9175 Classe 1 IM siempre que el foam sea ignífugo (FR PU 35Kg/m ³) <i>Condiciones ignífugas dependientes del tipo de foam utilizado.</i>
Light Fastness 6 (ISO 105 - B02:2013)	Lichtechtheit 6 (ISO 105 - B02:2013)	Solidité à la lumière 6 (ISO 105 - B02:2013)	Solidez a la luz 6 (ISO 105 - B02:2013)
Fastness to Rubbing Wet: 4, Dry: 4 (ISO 105 - X12:2002)	Reibechtheit Nass: 4, Trocken: 4 (ISO 105 - X12:2002)	Solidité au frottement Mouillé: 4, Sec: 4 (ISO 105 - X12:2002)	Solidez al rozamiento Húmedo: 4, Seco: 4 (ISO 105 - X12:2002)
Waterproof Hydrostatic head BS 3424 > 1 metre	Wasserdicht Wassersäule BS 3424 > 1 Metre	Imperméabilité Pression hydrostatique selon la norme BS3424 > 1 mètre	Resistente al Agua Base Hidrostática BS 3424 > 1 metro
Anti-microbial / Anti-fungal AATCC 147:2011	Anti-mikrobiell / Anti-Schimmel AATCC 147:2011	Anti-microbial / Anti-fungal AATCC 147:2011	Anti-microbial / Anti-fungal AATCC 147:2011
Urea Resistant BS 3424 Part 19 no significant deterioration after 24 hrs	Urin-Beständig BS3424 Teil 19, keine erkennbare Verschlechterung nach 24 Stunden	Résistance à l'urée Pas de détérioration significante après 24h selon la norme BS3424 partie 19	Resistencia a la Urea BS 3424 Parte 19: deterioro insignificante tras 24 horas
Bleach Cleanable BS EN ISO E03 colour change 4 for 10% chlorine solution.	Chlorbleiche-Beständig BS EN ISO E03 Farbänderung 4 bei 10%-iger Chlorbleiche.	Nettoyable au javel BS EN ISO E03 Résistance 4 dans une solution de chlore 10%	Posibilidad lavado con lejía BS EN ISO E03 Resistencia 4 en una solución de cloro 10%.
Cleaning Vacuum regularly. Wipe with a damp cloth or use proprietary upholstery shampoo. For full details see cleaning guide.	Reinigung Regelmässig absaugen. Mit einem feuchten Tuch abwischen oder mit einem Marken-Polstershampoo shampooieren. Details auf Anfrage.	Nettoyage Aspirer régulièrement. Essuyer avec un tissu humide ou shampooiner en utilisant un shampoing approprié à ce type de revêtements. Veuillez trouver tous les détails dans le manuel de nettoyage.	Limpieza Limpiar con aspirador con regularidad. Limpiar en seco, o bien lavar con un paño húmedo, o con un jabón especial para tapicerías. Por todos los detalles vea el manual de limpieza.
Please note that seam performance is dependent on seam construction and needle and thread type. We recommend that appropriate sewing advice be taken.	Eine optimale Nahtausreissfestigkeit hängt von der Nahtfahne, der verwendeten Nadel und dem Näh-Garn ab. Wir empfehlen daher Nähversuche durchzuführen.	Veuillez noter que la performance du joint dépend de sa construction ainsi que de l'aiguille et du type de fil utilisés.	Tenga en cuenta que el rendimiento de la costura depende de la construcción de la costura, además de la aguja y del tipo de rosca. Le recomendamos que se aconsejen para coser la costura.
Note: Batch to batch variations in shade may occur within commercial tolerances. We reserve the right to alter technical specifications without notice. The Unregistered Design Rights and the Copyright in all designs are the exclusive property of Camira Fabrics Limited.	Wichtig: Handelsübliche Farbabweichungen können auftreten und berechtigen nicht zur Reklamation. Wir behalten uns die Änderung technischer Spezifikationen vor. Die registrierten und nicht registrierten Urheberrechte der Dessinierungen sind ausschliessliches Eigentum der Camira Fabrics Limited.	Remarque: une variation de couleurs peut provenir (commercialement tolérable). Nous réservons le droit de changer les spécifications techniques sans préavis. Les Droits de Conception non-enregistrés et les droits d'auteur de tous les motifs sont la propriétés exclusives de Camira Fabrics Limited.	Nota: las variaciones de lote a lote en la sombra se puede producir dentro de tolerancias comerciales. Nos reservamos el derecho a efectuar modificaciones técnicas sin previo aviso. Los derechos sobre los diseños no registrados y los derechos de autor en todos los diseños son propiedad exclusiva de Camira Fabrics Limited.

Contact	
UK Head Office:	+44 (0)1924 490491
Germany:	+49 7031 60 84 30
Scandinavia:	+45 32 55 20 01
France/Benelux:	+32 56 227 266
USA:	+1 616 288 0655
China:	+86 (0) 21 6133 1812

www.camirafabrics.com



camira

style with substance

www.camirafabrics.com

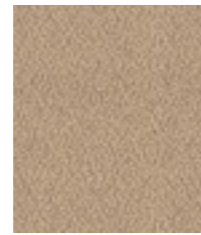
Intervene

Plain / Texture

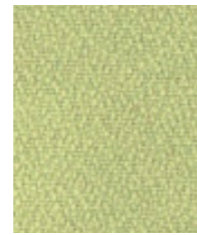


Please note that we do not recommend selection of fabric ranges and colours via this method. Colours can vary from screen to screen and may not a true representation of the actual colour. Swatch cards or samples can be provided on request for your consideration.

Please note that we do not recommend selection of fabric ranges and colours via this method. Colours can vary from screen to screen and may not a true representation of the actual colour. Swatch cards or samples can be provided on request for your consideration.



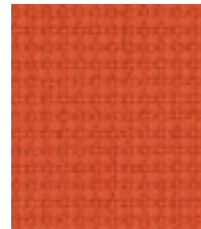
Plain
YH071



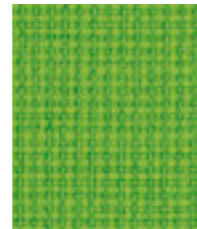
Plain
YH096



Texture
YW148



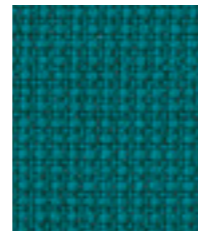
Texture
YW076



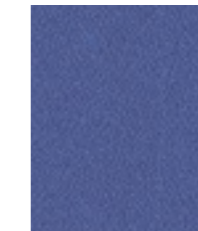
Texture
YW200



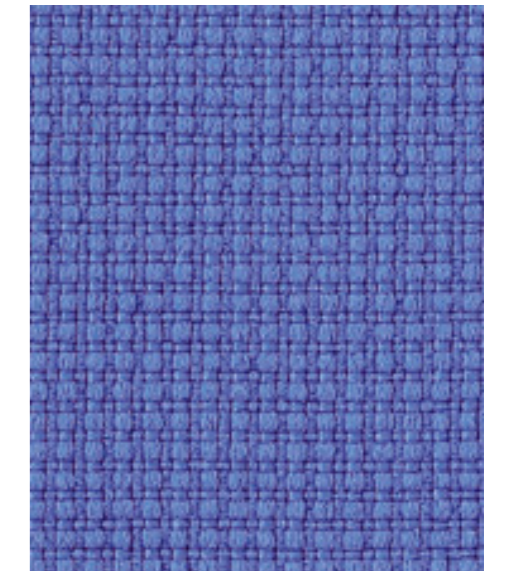
Texture
YW079



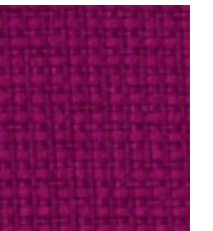
Texture
YW160



Plain
YH021



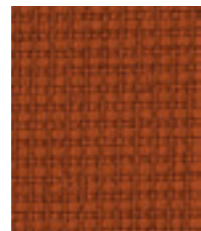
Texture
YW208



Texture
YW211



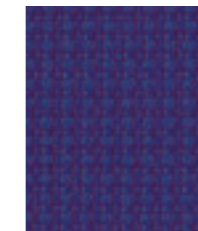
Texture
YW203



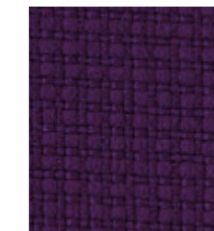
Texture
YW027



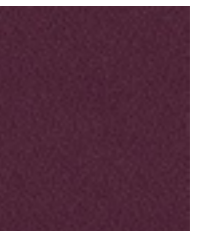
Plain
YH047



Texture
YW209



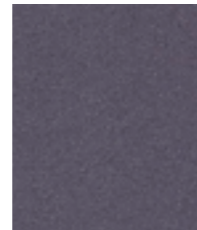
Texture
YW205



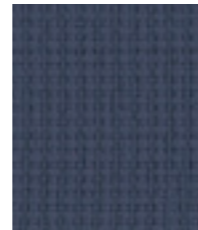
Plain
YH030



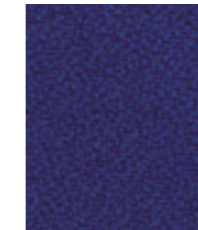
Plain
YH106



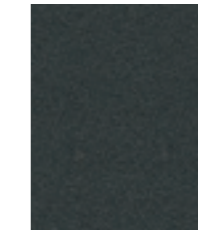
Plain
YH171



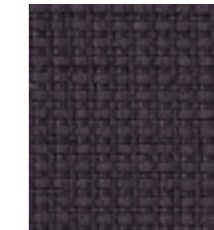
Texture
YW083



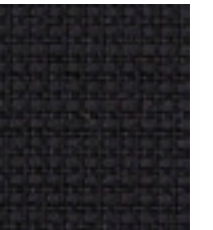
Plain
YH100



Plain
YH046



Texture
YW145



Texture
YW009