

Fabric

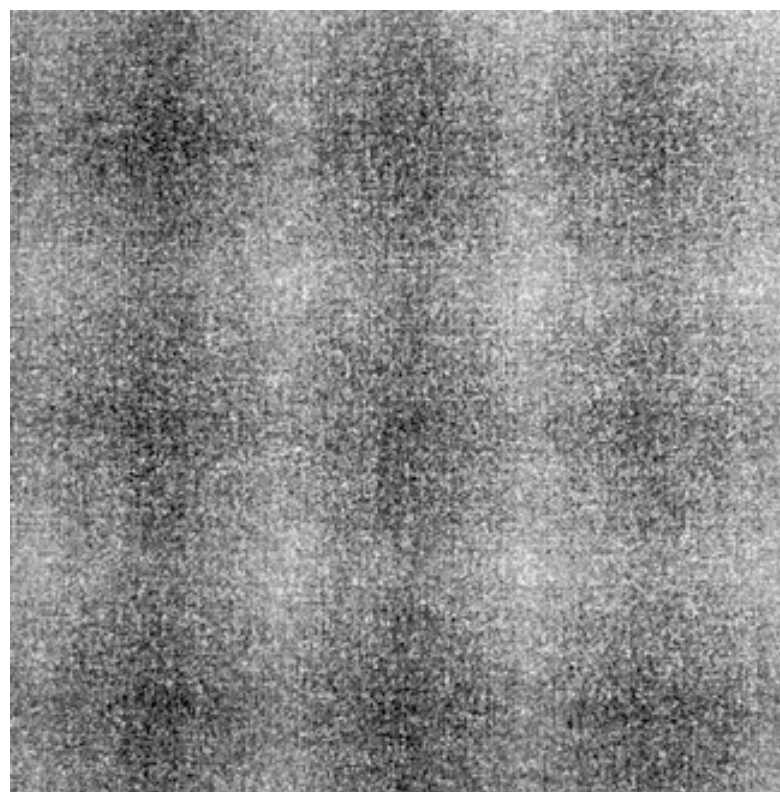
Seat Back: Hebden Hawes

Seat Arm: Hemp Dew



20.5cm

24cm



Hemp & Hebden - Product information

Hemp and Hebden use two of nature's cleverest renewable fibres to create upholstery fabrics of natural beauty. Wool and hemp have been blended together to create ranges with soft handle and inherent flame retardancy in a beautiful array of colourways.

Hemp is a classic plain weave that works perfectly alone or in combination with the large scale dappled check design of Hebden.

Both ranges are certified to the EU Ecolabel and have an exceptional eco story.



Technical information

UK

Composition
60% Virgin Wool, 40% True Hemp

Environmental
Rapidly renewable and compostable. Certified to the EU Ecolabel.

Width
140cm minimum

Weight
460g/m² ±5% (645g/lin.m ±5%)

Pattern Repeat - Hebden
Width 20.5cm, Length 24cm

Abrasion Resistance
5 year guarantee / 50,000 Martindale cycles (full details available)

Flammability
BS EN 1021 - 1:2014 (cigarette)
BS EN 1021 - 2:2014 (match)
BS 5852:2006 Section 4 Ignition Source 5
BS 7176:2007 Medium Hazard
UNI 9175 Class 1 IM
Note: Flammability performance is dependent on foam used.

Light Fastness
5 (ISO 105 - B02:2014)

Fastness to Rubbing
Wet: 3, Dry: 4 (ISO 105 - X12:2002)

Cleaning
Vacuum regularly. Professionally dry clean or wipe clean with a damp cloth.

Please note that seam performance is dependent on seam construction and needle and thread type. We recommend that appropriate sewing advice be taken.

Note: Batch to batch variations in shade may occur within commercial tolerances. We reserve the right to alter technical specifications without notice. The Unregistered Design Rights and the Copyright in all designs are the exclusive property of Camira Fabrics Limited.

D

Zusammensetzung
60% Schurwolle, 40% Echter Hanf

Umweltfreundlich
Schnell erneuerbar und kompostierbar. Nach Zertifikat EU Ecolabel.

Breite
140cm nutzbare Breite

Gewicht
460g/m² ±5% (645g/ftd.M ±5%)

Rapport - Hebden
Breite 20.5cm, Länge 24cm

Scheuerfestigkeit
5 Jahre Garantie / 50,000 Martindale Scheuertouren (Details auf Anfrage)

Feuersicherung
BS EN 1021 - 1:2014 (Zigarettestest)
BS EN 1021 - 2:2014 (Streichholztest)
BS 5852:2006 Section 4 Ignition Source 5
BS 7176:2007 Medium Hazard
UNI 9175 Class 1 IM
Bemerkung: Schwerentflammbarkeit hängt von verwendetem Schaum ab

Lichtechtheit
5 (ISO 105 - B02:2014)

Reibechtheit
Nass: 3, Trocken: 4 (ISO 105 - X12:2002)

Reinigung
Regelmässig absaugen. Professionelle Trockenreinigung. Alternativ dazu mit einem feuchten Tuch abwischen.

Eine optimale Nahtaureisefestigkeit hängt von der Nähfahne, der verwendeten Nadel und dem Näh-Garn ab. Wir empfehlen daher Nähversuche durchzuführen.

Wichtig: Handelsübliche Farbabweichungen können auftreten und berechtigen nicht zur Reklamation. Wir behalten uns die Änderung technischer Spezifikationen vor. Die registrierten und nicht registrierten Urheberrechte der Dessinierungen sind ausschliessliches Eigentum der Camira Fabrics Limited.

F

Composition
60% Laine Vierge, 40% Vrai Chanvre

Écologique
Rapidement renouvelable et compostable avec le certificat EU Ecolabel.

Largeur
140cm minimum

Poids
460g/m² ±5% (645g/m.l ±5%)

Répétition du motif - Hebden
Largeur 20.5cm, Longueur 24cm

Résistance à l'abrasion
Garantie de 5 ans / 50,000 Martindale tours (renseignements complémentaires disponibles)

Flammabilité
BS EN 1021 - 1:2014 (cigarette)
BS EN 1021 - 2:2014 (allumette)
BS 5852:2006 Section 4 Ignition Source 5
BS 7176:2007 Medium Hazard
UNI 9175 Class 1 IM
Notez: Réaction au feu dépend de la mousse utilisée.

Solidité à la lumière
5 (ISO 105 - B02:2014)

Solidité au Frottement
Mouillé: 3, Sec: 4 (ISO 105 - X12:2002)

Nettoyage
Aspirer régulièrement. Nettoyage à sec professionnel. Autrement, essuyer avec un tissu humide.

Veuillez noter que la performance du joint dépend de sa construction ainsi que de l'aiguille et du type de fil utilisés.

Remarque: une variation de couleurs peut provenir (commerciallement tolérable). Nous réservons le droit de changer les spécifications techniques sans préavis. Les Droits de Conception non-enregistrés et les droits d'auteur de tous les motifs sont la propriété exclusives de Camira Fabrics Limited.

Contact

UK Head Office: +44 (0)1924 490491

Germany: +49 7031 60 84 30

Scandinavia: +45 32 55 20 01

France/Benelux: +32 56 227 266

USA: + 616 288 0655

China: + 86 (0) 21 6133 1812

www.camirafabrics.com



ES

Composición
60% Lana Virgen, 40% Verdadero Cáñamo

Ambiental
Rapidamente renovable y compostable. Certificado con EU Flower.

Ancho
140cm mínimo

Peso
460g/m² ±5% (645g/lin.m ±5%)

Repetición en el diseño - Hebden
Ancho 20.5cm, Largo 24cm

Resistencia a la abrasión
Garantía de uso 5 años / 50,000 Martindale ciclos (más información disponible bajo consulta)

Inflamabilidad
BS EN 1021 - 1:2014 (cigarillo)
BS EN 1021 - 2:2014 (cerilla)
BS 5852:2006 Section 4 Ignition Source 5
BS 7176:2007 Medium Hazard
UNI 9175 Class 1 IM
Condiciones ignifugas dependientes del tipo de foam utilizado.

Solidez a la luz
5 (ISO 105 - B02:2014)

Solidez al rozamiento
Húmedo: 3, Seco: 4 (ISO 105 - X12:2002)

Limpeza
Limpiar con aspirador con regularidad. Limpiar en seco, o bien lavar con un paño húmedo.

enga en cuenta que el rendimiento de la costura depende de la construcción de la costura, además de la aguja y del tipo de rosca. Le recomendamos que se aconsejen para coser la costura.

Nota: las variaciones de lote a lote en la sombra se puede producir dentro de tolerancias comerciales. Nos reservamos el derecho a efectuar modificaciones técnicas sin previo aviso. Los derechos sobre los diseños no registrados y los derechos de autor en todos los diseños son propiedad exclusiva de Camira Fabrics Limited.

camira

style with substance

www.camirafabrics.com

Hemp & Hebden



Task seating



Soft seating



Cigarette & Match



Medium Hazard



Environmental



Year guarantee

Please note that we do not recommend selection of fabric ranges and colours via this method. Colours can vary from screen to screen and may not a true representation of the actual colour. Swatch cards or samples can be provided on request for your consideration.

Hemp

www.camirafabrics.com



Oat
HWP05



Seed
HWP13



Grain
HWP27



Dale
HWP18



Alec
HWP12



Arable
HWP04



Hectare
HWP21



Fallow
HWP28



Ashworth
HWP26



Root
HWP06



Hedgerow
HWP09



Barn
HWP23

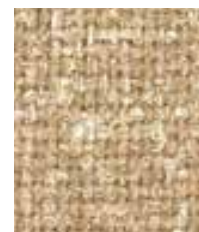


Plough
HWP01



Sickle
HWP30

Hemp & Hebden



Bale
HWP02



Hexby
HWC02



Gorse
HWP03



Hayton
HWC03



Pollen
HWP08



Horsforth
HWC08



Acre
HWP19



Honeywell
HWC19



Trough
HWP20



Hornby
HWC20

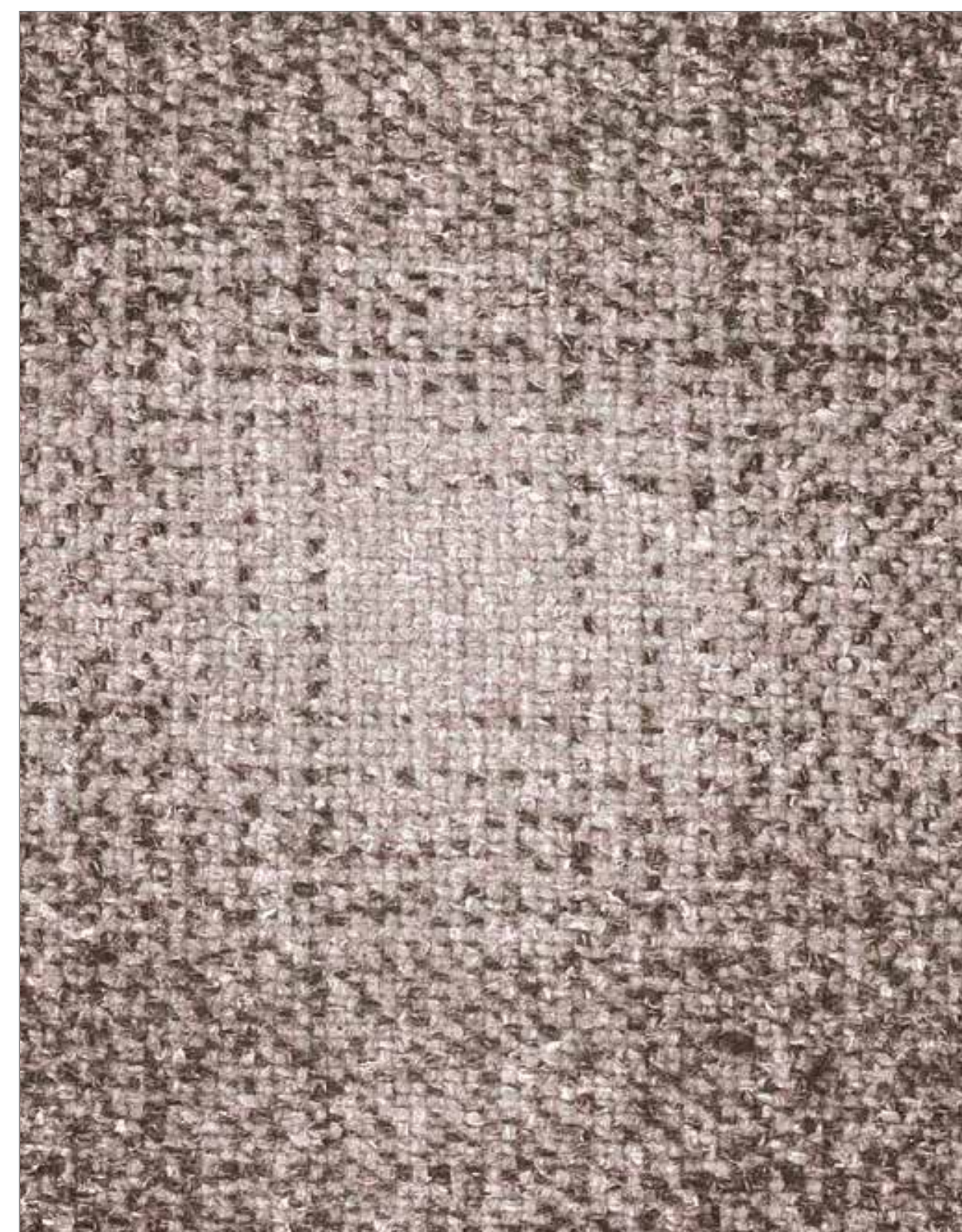


Heath
HWP07



Hopton
HWC07

Please note that we do not recommend selection of fabric ranges and colours via this method. Colours can vary from screen to screen and may not be a true representation of the actual colour. Swatch cards or samples can be provided on request for your consideration.



Hawes
HWC16



Dew
HWP16