

## Product information

Cara is a plain weave panel fabric available in 32 commercial colourways. One of our most popular vertical surface fabrics. Cara is used extensively on desk screens, wallsides and on pin boards.

### Contact

UK Head Office:	+44 (0)1924 490491
Germany:	+49 7031 60 84 30
Scandinavia:	+45 32 55 20 01
France/Benelux:	+32 56 227 266
USA:	+1 317 484 0305
China:	+ 86 (0) 21 6133 1812

[www.camirafabrics.com](http://www.camirafabrics.com)



## Technical information

### UK

**Composition**  
100% Polypropylene

**Width**  
170cm minimum

**Weight**  
220g/m<sup>2</sup> ±5% (375g/lin.m ±5%)

**Flammability**  
BS 476 Part 7 Class 1  
BS EN 1021 - 1:2006 (cigarette)  
*Note: Flammability performance is dependent on components used.*

**\*Light Fastness**  
6 (ISO 105 - B02:2013)

**\*Fastness to Rubbing**  
Wet: 4, Dry: 4 (ISO 105 - X12:2002)

**Cleaning**  
Vacuum regularly. Wipe clean with a damp cloth or shampoo using proprietary upholstery shampoo.

\* Tested in accordance with BS 2543:1995/2004. Please note that seam performance is dependent on seam construction and needle and thread type. We recommend that appropriate sewing advice be taken.

**Note:** Batch to batch variations in shade may occur within commercial tolerances. We reserve the right to alter technical specifications without notice. The Unregistered Design Rights and the Copyright in all designs are the exclusive property of Camira Fabrics Limited.

### D

**Zusammensetzung**  
100% Polypropylen

**Breite**  
170cm nutzbare Breite

**Gewicht**  
220g/m<sup>2</sup> ±5% (375g/lf.d.M ±5%)

**Feuersicherung**  
BS 476 Part 7 Class 1  
BS EN 1021 - 1:2006 (Zigarettestest)  
*Bemerkung: Schwerentflammbarkeit hängt von verwendetem Komponenten ab.*

**\*Lichtechtheit**  
6 (ISO 105 - B02:2013)

**\*Reibechtheit**  
Nass: 4, Trocken: 4 (ISO 105 - X12:2002)

**Reinigung**  
Regelmässig staubsaugen. Dazu mit einem feuchten Tuch abwischen, oder mit einem speziellen Polsterschaum behandeln.

\* Wurde nach BS 2543:1995/2004 getestet. Eine optimale Nahtausreissfestigkeit hängt von der Nahtfahne, der verwendeten Nadel und dem Näh-Garn ab. Wir empfehlen daher Nähversuche durchzuführen.

**Wichtig:** Handelsübliche Farbabweichungen können auftreten und berechtigen nicht zur Reklamation. Wir behalten uns die Änderung technischer Spezifikationen vor. Die registrierten und nicht registrierten Urheberrechte der Dessinierungen sind ausschliessliches Eigentum der Camira Fabrics Limited.

### F

**Composition**  
100% Polypropylène

**Largeur**  
170cm minimum

**Poids**  
220g/m<sup>2</sup> ±5% (375g/m.l ±5%)

**Flammabilité**  
BS 476 Part 7 Class 1  
BS EN 1021 - 1:2006 (cigarette)  
*Notez: Réaction au feu dépend du composite utilisé.*

**\*Solidité à la lumière**  
6 (ISO 105 - B02:2013)

**\*Solidité au Frottement**  
Mouillé: 4, Sec: 4 (ISO 105 - X12:2002)

**Nettoyage**  
Aspirer régulièrement. Essuyer avec une étoffe humide ou nettoyer à l'aide d'un produit approprié pour tissus d'ameublement.

\* Testé selon la norme BS 2543: 1995/2004. Veuillez noter que la performance du joint dépend de sa construction ainsi que de l'aiguille et du type de fil utilisés.

**Remarque:** une variation de couleurs peut provenir (commerciallement tolérable). Nous réservons le droit de changer les spécifications techniques sans préavis. Les Droits de Conception non-enregistrés et les droits d'auteur de tous les motifs sont la propriété exclusives de Camira Fabrics Limited.

### ES

**Composición**  
100% Polipropileno

**Ancho**  
170cm mínimo

**Peso**  
220g/m<sup>2</sup> ±5% (375g/lin.m ±5%)

**Inflamabilidad**  
BS 476 Part 7 Class 1  
BS EN 1021 - 1:2006 (cigarillo)  
*Condiciones ignífugas depende de los componentes utilizados.*

**\*Solidez a la luz**  
6 (ISO 105 - B02:2013)

**\*Solidez al rozamiento**  
Húmedo: 4, Seco: 4 (ISO 105 - X12:2002)

**Limpieza**  
Limpiar con aspiradora frecuentemente. Bien lavar con un paño húmedo o con un champú apropiado para tapicería.

\* Probado de acuerdo con la norma BS 2543:1995 / 2004. Tenga en cuenta que el rendimiento de la costura depende de la construcción de la costura, además de la aguja y del tipo de rosca. Le recomendamos que se aconsejen para coser la costura.

**Nota:** las variaciones de lote a lote en la sombra se puede producir dentro de tolerancias comerciales. Nos reservamos el derecho a efectuar modificaciones técnicas sin previo aviso. Los derechos sobre los diseños no registrados y los derechos de autor en todos los diseños son propiedad exclusiva de Camira Fabrics Limited.

# camira

style with substance

[www.camirafabrics.com](http://www.camirafabrics.com)

# Cara



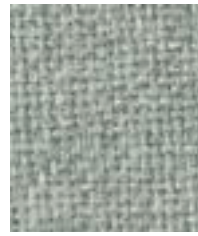
Panels



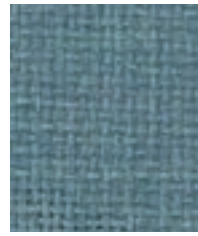
5  
Year guarantee

Please note that we do not recommend selection of fabric ranges and colours via this method. Colours can vary from screen to screen and may not a true representation of the actual colour. Swatch cards or samples can be provided on request for your consideration.

Please note that we do not recommend selection of fabric ranges and colours via this method. Colours can vary from screen to screen and may not a true representation of the actual colour. Swatch cards or samples can be provided on request for your consideration.



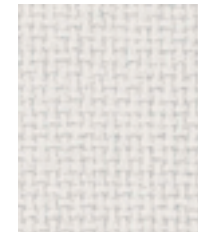
**Spray**  
EJ033



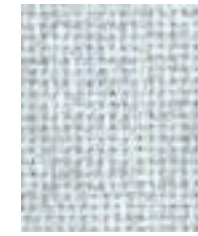
**Ronay**  
EJ189



**Dolphin**  
EJ105



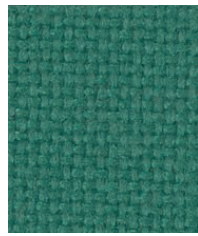
**Vit**  
EJ184



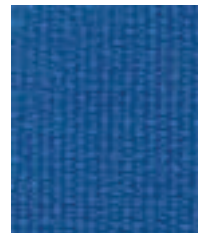
**Glass**  
EJ004



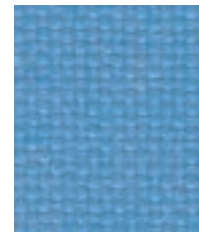
**Hillswick**  
EJ190



**Carron**  
EJ015



**Galilee**  
EJ125



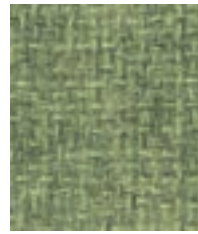
**Inverness**  
EJ175



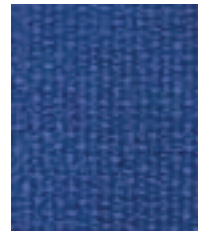
**Lomond**  
EJ192



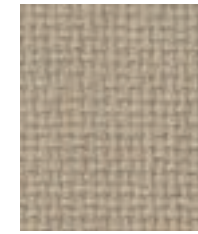
**Shetland**  
EJ191



**Fair Isle**  
EJ186



**Adriatic**  
EJ154



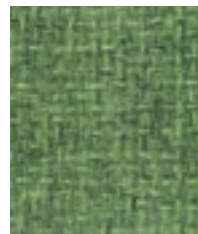
**Beltane**  
EJ193



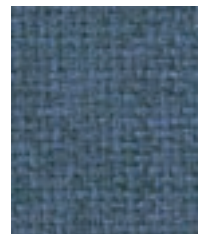
**Chaucer**  
EJ172



**Clan**  
EJ169



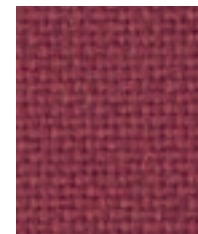
**Staffa**  
EJ185



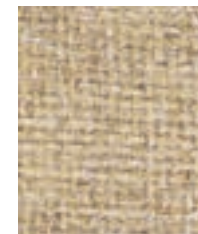
**Easdale**  
EJ188



**Lossie**  
EJ197



**Tummel**  
EJ038



**Austen**  
EJ173



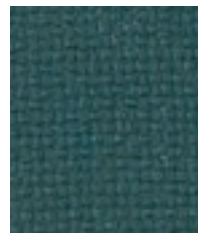
**Maree**  
EJ195



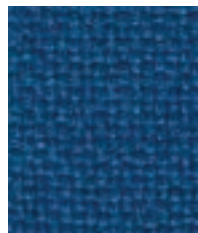
**Portland**  
EJ016



**Denny**  
EJ196



**Lora**  
EJ187



**Cluanie**  
EJ180



**Walten**  
EJ011



**Pitlochry**  
EJ076



**Lerwick**  
EJ194



**Merrick**  
EJ048



**Lead**  
EJ104



**Black**  
EJ138