

Fabric

Top: Contact
Reach LDC06

Bottom: Balance
Focus LDB06

14.5cm



14.5cm



Product information

Inspired by the re-imagined plaids of the catwalks, the Landscape Collection is a tailored approach to meet the demands of the future office. Modular systems are increasingly used to travel through and define open workspace environments. Balance, Contact and Synergy can work in isolation or unison.

Technical information

UK

Composition
95% Virgin Wool, 5% Polyamide
Non metallic dyestuffs

Width
140cm minimum

Weight
400g/m2 ±5% (560g/lin.m ±5%)

Pattern Repeat
Balance: Width 14.5cm, Length 14.5cm
Contact: Width 14.5cm, Length 57cm

Abrasion Resistance
60,000 Martindale cycles
5 year guarantee (full details available)

Flammability

BS EN 1021 - 1:2006 (cigarette)
BS EN 1021 - 2:2006 (match)
BS 7176:2007 Low Hazard

Optional: Please specify when ordering:
BS 5852:2006 Section 4 Ignition Source 5 when FR treated
BS 7176:2007 Medium Hazard when FR treated

Note: Flammability performance is dependent on foam used.

Light Fastness

5 (ISO 105 - B02:2013)

Fastness to Rubbing

Wet: 4, Dry: 4 (ISO 105 - X12:2002)

Cleaning

Vacuum regularly. Professionally dry clean or wipe clean with a damp cloth.

Please note that seam performance is dependent on seam construction and needle and thread type. We recommend that appropriate sewing advice be taken.

Note: Batch to batch variations in shade may occur within commercial tolerances. We reserve the right to alter technical specifications without notice. The Unregistered Design Rights and the Copyright in all designs are the exclusive property of Camira Fabrics Limited.

D

Zusammensetzung
95% Schurwolle, 5% Polyamid
Nicht schwermetallhaltige Farbstoffe

Breite
140cm nutzbare Breite

Gewicht
400g/m2 ±5% (560g/lfm ±5%)

Rapport
Balance: Breite 14.5cm, Länge 14.5cm
Contact: Breite 14.5cm, Länge 57cm

Scheuerfestigkeit
60,000 Martindale Scheuertouren
5 Jahre Garantie (Details auf Anfrage)

Feuersicherung

BS EN 1021 - 1:2006 (Zigarettestest)
BS EN 1021 - 2:2006 (Sreichholzttest)
BS 7176:2007 Low Hazard

Bitte bei Auftragserteilung angeben:
BS 5852:2006 Section 4 Ignition Source 5 wenn mit FR ausgerüstet
BS 7176:2007 Medium Hazard wenn mit FR ausgerüstet

Bemerkung: Schwerentflammbarkeit hängt von verwendetem Schaum ab.

Lichtechtheit

5 (ISO 105 - B02:2013)

Reibechtheit

Nass: 4, Trocken: 4 (ISO 105 - X12:2002)

Reinigung

Regelmässig absaugen. Professionelle Trockenreinigung. Alternativ dazu mit einem feuchten Tuch abwischen.

Eine optimale Nahtausreissfestigkeit hängt von der Nähnähne, der verwendeten Nadel und dem Näh-Garn ab. Wir empfehlen daher Nähversuche durchzuführen.

Wichtig: Handelsübliche Farbabweichungen können auftreten und berechtigen nicht zur Reklamation. Wir behalten uns die Änderung technischer Spezifikationen vor. Die registrierten und nicht registrierten Urheberrechte der Designierungen sind ausschliessliches Eigentum der Camira Fabrics Limited.

F

Composition
95% Laine Vierge, 5% Polyamid
Teintures non métalliques

Largeur
140cm minimum

Poids
400g/m2 ±5% (560g/lin.m ±5%)

Répetition du motif
Balance: Largeur 14.5cm, Longueur 14.5cm
Contact: Largeur 14.5cm, Longueur 57cm

Résistance à l'abrasion
60,000 cycles Martindale
Garantie de 5 ans (renseignements complémentaires disponibles)

Flammabilité

BS EN 1021 - 1:2006 (cigarette)
BS EN 1021 - 2:2006 (allumette)
BS 7176:2007 Low Hazard

Prrière de le mentionner lors de la commande:
BS 5852:2006 Section 4 Ignition Source 5 si traitement FR
BS 7176:2007 Medium Hazard si traitement FR

Note: Réaction au feu dépend de la mousse utilisée.

Solidité à la lumière

5 (ISO 105 - B02:2013)

Solidité au Frottement

Mouillé: 4, Sec: 4 (ISO 105 - X12:2002)

Nettoyage

Aspirer régulièrement. Nettoyage à sec professionnel. Autrement, essuyer avec un tissu humide.

Veuillez noter que la performance du joint dépend de sa construction ainsi que de l'aiguille et du type de fil utilisés. Nous recommandons de suivre les conseils générales de couture.

Remarque: une variation de couleurs peut provenir commercialement tolérable). Nous réservons le droit de changer les spécifications techniques sans préavis. Les Droits de Conception non-enregistrés et les droits d'auteur de tous les motifs sont la propriété exclusive de Camira Fabrics Limited.

www.camirafabrics.com



ES

Composición
95% Lana Virgen, 5% Polyamid
Tintes no metálicos

Ancho
140cm mínimo

Peso
400g/m2 ±5% (560g/lin.m ±5%)

Repeticion en el diseño
Balance: Ancho 14.5cm, Largo 14.5cm
Contact: Ancho 14.5cm, Largo 57cm

Resistencia a la abrasión
60,000 Martindale Tours
Garantía de uso 5 años (más información disponible bajo consulta)

Inflamabilidad

BS EN 1021 - 1:2006 (cigarrillo)
BS EN 1021 - 2:2006 (cerilla)
BS 7176:2007 Low Hazard

Con tratamiento adicional de foamizado por favor especificar cuando se requiere en el pedido:
BS 5852:2006 Section 4 Ignition Source 5 estando con tratamiento FR
BS 7176:2007 Medium Hazard estando con tratamiento FR
Condiciones ignifugas dependientes del tipo de foam utilizado.

Solidez a la luz

5 (ISO 105 - B02:2013)

Solidez al rozamiento

Húmedo: 4, Seco: 4 (ISO 105 - X12:2002)

Limpeza

Limpiar con aspirador con regularidad. Limpiar en seco, o bien lavar con un paño húmedo.

Tenga en cuenta que el rendimiento de la costura depende de la construcción de la costura, además de la aguja y del tipo de rosca. Le recomendamos que se aconsejen para coser la costura.

Nota: las variaciones de lote a lote en la sombra se puede producir dentro de tolerancias comerciales. Nos reservamos el derecho a efectuar modificaciones técnicas sin previo aviso. Los derechos sobre los diseños no registrados y los derechos de autor en todos los diseños son propiedad exclusiva de Camira Fabrics Limited.

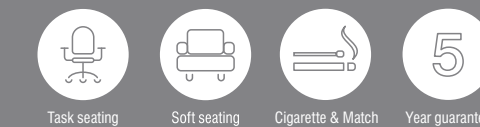
camira

style with substance

www.camirafabrics.com

Landscape Collection

Balance / Contact / Synergy



Task seating

Soft seating

Cigarette & Match

Year guarantee

Landscape Collection

Landscape Collection

Please note that we do not recommend selection of fabric ranges and colours via this method. Colours can vary from screen to screen and may not a true representation of the actual colour. Swatch cards or samples can be provided on request for your consideration.

Please note that we do not recommend selection of fabric ranges and colours via this method. Colours can vary from screen to screen and may not a true representation of the actual colour. Swatch cards or samples can be provided on request for your consideration.



Balance
Symmetry LDB01



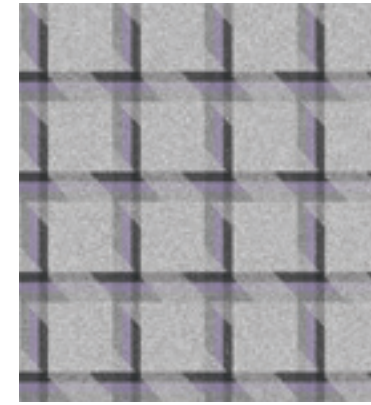
Synergy
Random LDS01



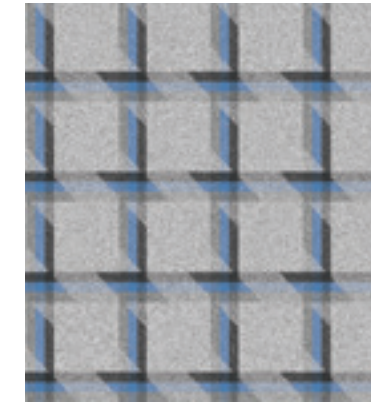
Contact
Connect LDC01



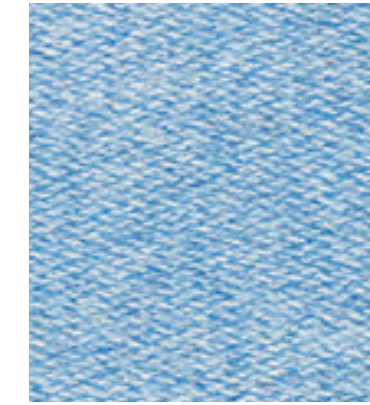
Balance
Align LDB05



Synergy
Venture LDS05



Balance
Adapt LDB03



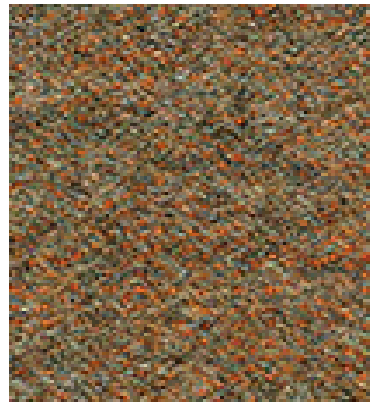
Synergy
Fortune LDS03



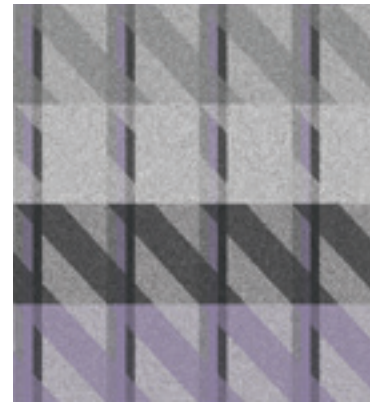
Balance
Focus LDB06



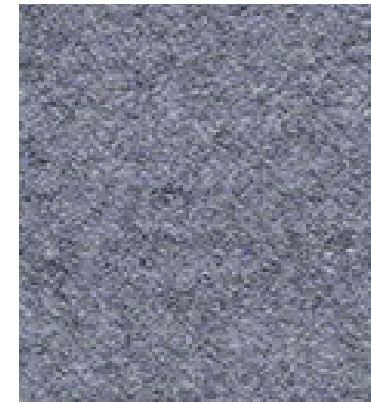
Synergy
Fuse LDS14



Synergy
Alliance LDS09



Contact
Network LDC05



Synergy
Combine LDS13



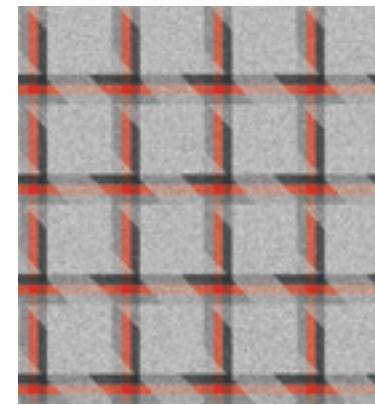
Synergy
Blend LDS11



Contact
Signal LDC03



Synergy
Risk LDS06



Balance
Equal LDB04



Synergy
Gamble LDS04



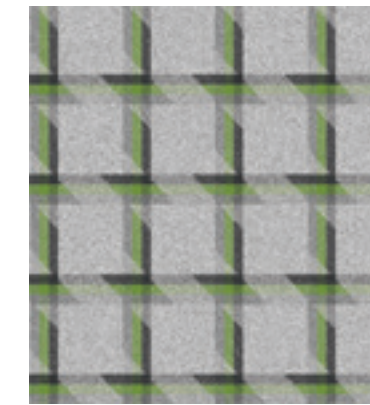
Synergy
Fate LDS07



Synergy
Fate LDS07



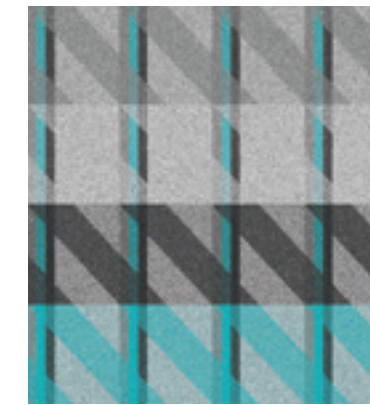
Balance
Parallel LDB07



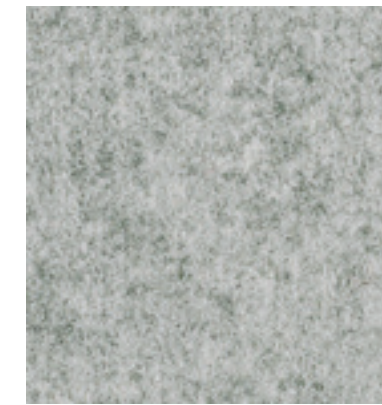
Balance
Tune LDB02



Synergy
Lucky LDS02



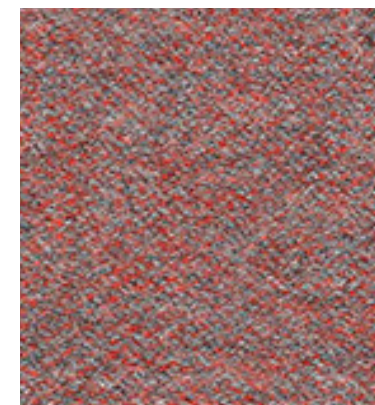
Contact
Reach LDC06



Synergy
Serendipity LDS08



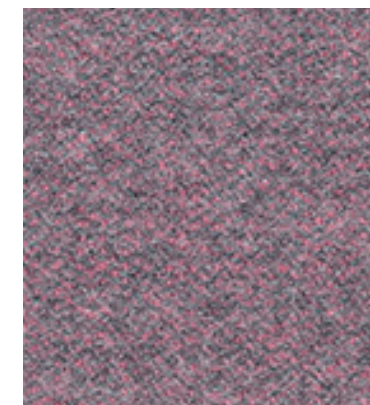
Contact
Converge LDC04



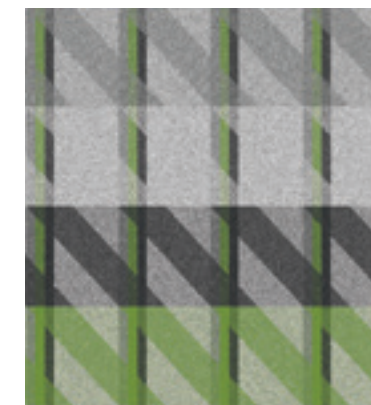
Synergy
Join LDS12



Contact
Companion LDC07



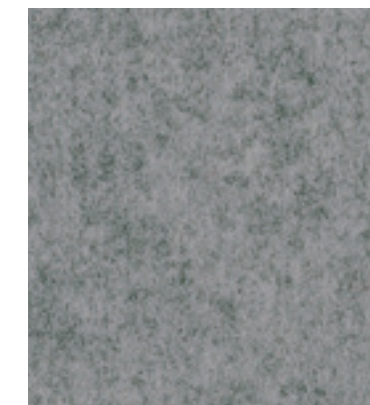
Synergy
Merge LDS15



Contact
Touch LDC02



Synergy
Union LDS10



Synergy
Partner LDS16



Synergy
Mix LDS17