

## Product information

Blazer is a pure new wool upholstery fabric with a billiard cloth felted finish. Created from 100% Laneve branded wool, its origin can be traced back to the individual sheep farms on South Island, New Zealand. Laneve promises wool integrity and complete chain of custody.

Blazer is certified to the EU Ecolabel.



<b>Contact</b>	
UK Head Office:	+44 (0)1924 490491
Germany:	+49 7031 60 84 30
Scandinavia:	+45 32 55 20 01
France/Benelux:	+32 56 227 266
USA:	+1 317 484 0305
China:	+ 86 (0) 21 6133 1812

[www.camirafabrics.com](http://www.camirafabrics.com)



## Technical information

### UK

#### Composition

100% Virgin Wool.  
Non metallic dyestuffs

#### Environmental

Rapidly renewable and compostable

#### Width

140cm minimum

#### Weight

460g/m2 ±5% (645g/lin.m ±5%)

#### \*Abrasion Resistance

5 year guarantee / 50,000 Martindale cycles (full details available)

#### Flammability

BS EN 1021 - 1:2006 (cigarette)  
BS EN 1021 - 2:2006 (match)  
BS 7176:2007 Low Hazard

#### Optional: Please specify when ordering:

BS 5852:2006 Section 4 Ignition Source 5  
BS 7176:2007 Medium Hazard

*Note: Flammability performance is dependent on foam used.*

#### \*Light Fastness

5 (ISO 105 - B02:2013)

#### \*Fastness to Rubbing

Wet: 4, Dry: 4 (ISO 105 - X12:2002)

#### Cleaning

Vacuum regularly. Professionally dry clean or wipe clean with a damp cloth.

\* Tested in accordance with BS EN 14465. Please note that seam performance is dependent on seam construction and needle and thread type. We recommend that appropriate sewing advice be taken.

**Note:** Batch to batch variations in shade may occur within commercial tolerances. We reserve the right to alter technical specifications without notice. The Unregistered Design Rights and the Copyright in all designs are the exclusive property of Camira Fabrics Limited.

### D

#### Zusammensetzung

100% Schurwolle.  
Nicht schwermetallhaltige Farbstoffe

#### Umweltfreundlich

Schnell erneuerbar und kompostierbar

#### Breite

140cm nutzbare Breite

#### Gewicht

460g/m2 ±5% (645g/lfld.M ±5%)

#### \*Scheuerfestigkeit

5 Jahre Garantie / 50,000 Martindale Scheuertouren (Details auf Anfrage)

#### Fuersicherung

BS EN 1021 - 1:2006 (Zigarettestest)  
BS EN 1021 - 2:2006 (Sreichholztest)  
BS 7176:2007 Low Hazard

#### Bitte bei Auftragserteilung angeben:

BS 5852:2006 Section 4 Ignition Source 5  
BS 7176:2007 Medium Hazard

*Bemerkung: Schwerentflammbarkeit hängt von verwendetem Schaum ab*

#### \*Lichtechtheit

5 (ISO 105 - B02:2013)

#### \*Reibechtheit

Nass: 4, Trocken: 4 (ISO 105 - X12:2002)

#### Reinigung

Regelmässig absaugen. Professionelle Trockenreinigung. Alternativ dazu mit einem feuchten Tuch abwischen.

\* Wurde nach BS EN 14465 getestet. Eine optimale Nahtausreissfestigkeit hängt von der Nahtfahne, der verwendeten Nadel und dem Näh-Garn ab. Wir empfehlen daher Nähversuche durchzuführen.

**Wichtig:** Handelsübliche Farbabweichungen können auftreten und berechtigen nicht zur Reklamation. Wir behalten uns die Änderung technischer Spezifikationen vor. Die registrierten und nicht registrierten Urheberrechte der Dessinierungen sind ausschliessliches Eigentum der Camira Fabrics Limited.

### F

#### Composition

100% Laine Vierge.  
Teintures non métalliques

#### Écologique

Rapidement renouvelable et compostable

#### Largeur

140cm minimum

#### Poids

460g/m2 ±5% (645g/m.l ±5%)

#### \*Résistance à l'abrasion

Garantie de 5 ans / 50,000 Martindale tours (renseignements complémentaires disponibles)

#### Flammabilité

BS EN 1021 - 1:2006 (cigarette)  
BS EN 1021 - 2:2006 (allumette)  
BS 7176:2007 Low Hazard

#### Prière de le mentionner lors de la commande:

BS 5852:2006 Section 4 Ignition Source 5  
BS 7176:2007 Medium Hazard

*Notez: Réaction au feu dépend de la mousse utilisée.*

#### \*Solidité à la lumière

5 (ISO 105 - B02:2013)

#### \*Solidité au Frottement

Mouillé: 4, Sec: 4 (ISO 105 - X12:2002)

#### Nettoyage

Aspirer régulièrement. Nettoyage à sec professionnel. Autrement, essuyer avec un tissu humide.

\* Testé selon la norme BS EN 14465. Veuillez noter que la performance du joint dépend de sa construction ainsi que de l'aiguille et du type de fil utilisés.

**Remarque:** une variation de couleurs peut provenir (commerciallement tolérable). Nous réservons le droit de changer les spécifications techniques sans préavis. Les Droits de Conception non-enregistrés et les droits d'auteur de tous les motifs sont la propriété exclusive de Camira Fabrics Limited.

### ES

#### Composición

100% Lana Virgen.  
Tintes no metálicos

#### Ambiental

Rapidamente renovable y compostable

#### Ancho

140cm mínimo

#### Peso

460g/m2 ±5% (645g/lin.m ±5%)

#### \*Resistencia a la abrasión

Garantía de uso 5 años / 50,000 Martindale ciclos (más información disponible bajo consulta)

#### Inflamabilidad

BS EN 1021 - 1:2006 (cigarillo)  
BS EN 1021 - 2:2006 (cerilla)  
BS 7176:2007 Low Hazard

#### Con tratamiento adicional de foamizado por favor especificar cuando se requiere en el pedido:

BS 5852:2006 Section 4 Ignition Source 5  
BS 7176:2007 Medium Hazard

*Condiciones ignifugas dependientes del tipo de foam utilizado.*

#### \*Solidez a la luz

5 (ISO 105 - B02:2013)

#### \*Solidez al rozamiento

Húmedo: 4, Seco: 4 (ISO 105 - X12:2002)

#### Limpeza

Limpiar con aspirador con regularidad. Limpiar en seco, o bien lavar con un paño húmedo.

\* Probado de acuerdo con la norma BS EN 14465. Tenga en cuenta que el rendimiento de la costura depende de la construcción de la costura, además de la aguja y del tipo de rosca. Le recomendamos que se aconsejen para coser la costura.

**Nota:** las variaciones de lote a lote en la sombra se puede producir dentro de tolerancias comerciales. Nos reservamos el derecho a efectuar modificaciones técnicas sin previo aviso. Los derechos sobre los diseños no registrados y los derechos de autor en todos los diseños son propiedad exclusiva de Camira Fabrics Limited.

# camira

style with substance

[www.camirafabrics.com](http://www.camirafabrics.com)

# Blazer



Task seating



Soft seating



Cigarette & Match

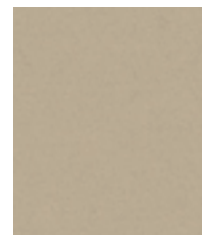


Environmental



Year guarantee

Please note that we do not recommend selection of fabric ranges and colours via this method. Colours can vary from screen to screen and may not a true representation of the actual colour. Swatch cards or samples can be provided on request for your consideration.



Fairfield  
CUZ47



Wesley  
CUZ82



Dunhurst  
CUZ58



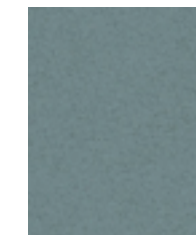
Ulster  
CUZ1F



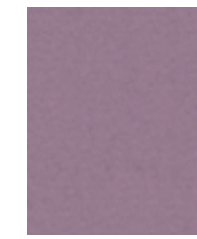
Bath  
CUZ1D



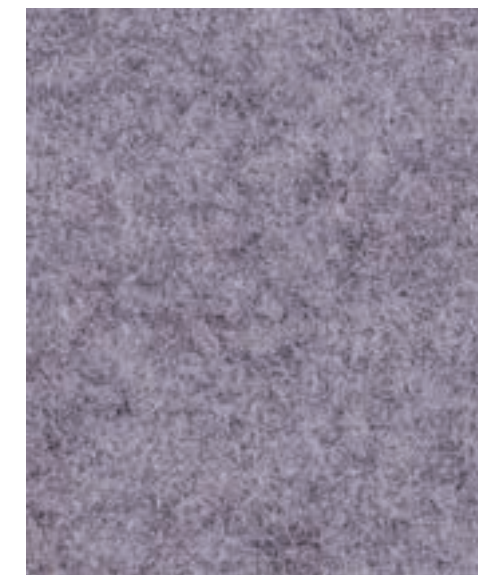
Silverdale  
CUZ28



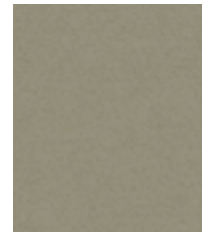
Brighton  
CUZ1Q



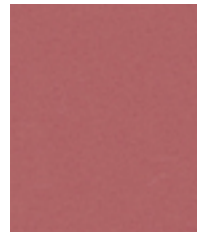
Sheffield  
CUZ1T



Nottingham  
CUZ1S



Durham  
CUZ14



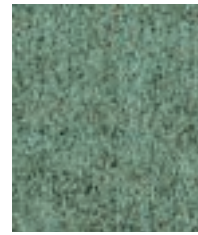
Dollar  
CUZ84



Butterstone  
CUZ83



Keil  
CUZ85



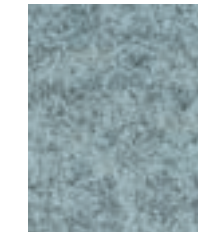
Lancaster  
CUZ1C



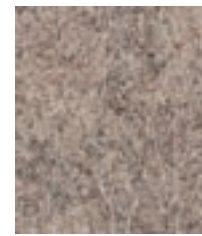
Latymer  
CUZ33



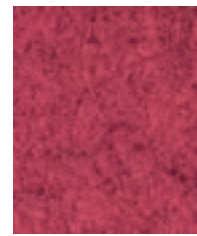
Surrey  
CUZ1E



Plymouth  
CUZ1R



St Andrews  
CUZ86



Aberdeen  
CUZ87



Starley  
CUZ88



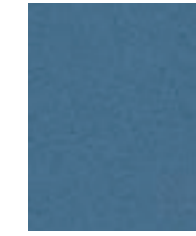
Goldsmith  
CUZ39



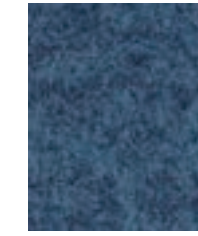
Newport  
CUZ1L



Aberlour  
CUZ1J



Manchester  
CUZ1V



Newcastle  
CUZ1W



St Martins  
CUZ1X



Sussex  
CUZ1U



Trevelyan  
CUZ31



Rockport  
CUZ89



Edge Hill  
CUZ90



Oriel  
CUZ18



Bryanston  
CUZ53



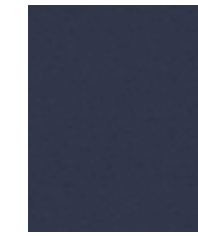
Aston  
CUZ02



Salford  
CUZ1G



Balliol  
CUZ24



Edinburgh  
CUZ1Y



Exeter  
CUZ1Z



Kingsmead  
CUZ67



Magdalene  
CUZ21



Handcross  
CUZ63



Camphill  
CUZ1K



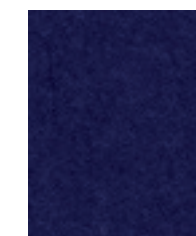
Belhaven  
CUZ1H



Knightsbridge  
CUZ26



Silcoates  
CUZ30



Oxford  
CUZ09



Collingwood  
CUZ27



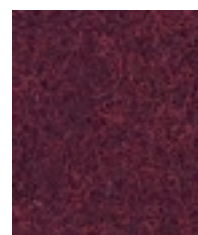
Loughborough  
CUZ2A



Eastbourne  
CUZ46



City  
CUZ1A



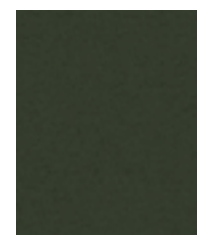
Imperial  
CUZ1B



Wellington  
CUZ13



Kimbolton  
CUZ66



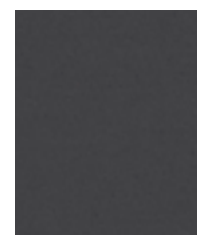
Glasgow  
CUZ1M



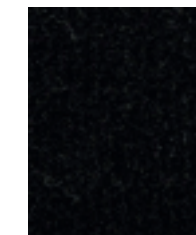
Cardiff  
CUZ1N



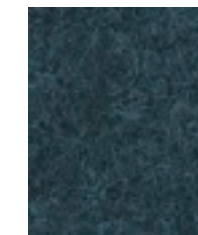
Hull  
CUZ1P



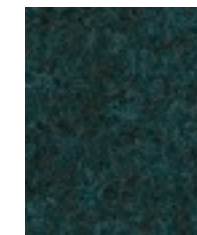
Winchester  
CUZ12



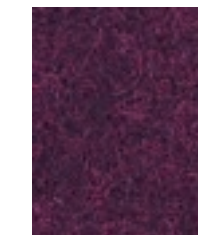
Napier  
CUZ08



Glenalmond  
CUZ62



Bromsgrove  
CUZ35



Banbridge  
CUZ32