

## Product information

Low Hazard commercial seating fabric, Advantage, offers a combination of enduring aesthetic appeal and high performance durability which means it will look good and last for years. Advantage is a plain weave fabric in a rich assortment of colourways in both plains and mixes.

### Contact

UK Head Office:	+44 (0)1924 490491
Germany:	+49 7031 60 84 30
Scandinavia:	+45 32 55 20 01
France/Benelux:	+32 56 227 266
USA:	+1 317 484 0305
China:	+ 86 (0) 21 6133 1812

[www.camirafabrics.com](http://www.camirafabrics.com)



## Technical information

### UK

#### Composition

60% Polypropylene, 30% Wool,  
10% Viscose

#### Width

130cm minimum

#### Weight

360g/m2 ±5% (470g/lin.m ±5%)

#### \*Abrasion Resistance

5 year guarantee / 90,000 Martindale cycles (full details available)

#### Flammability

BS EN 1021 - 1:2006 (cigarette)  
BS EN 1021 - 2:2006 (match)  
BS 7176:2007 Low Hazard

*Note: Flammability performance is dependent on foam used.*

#### \*Light Fastness

5 (ISO 105 - B02:2013)

#### \*Fastness to Rubbing

Wet: 4, Dry: 4 (ISO 105 - X12:2002)

#### Cleaning

Vacuum regularly. Wipe clean with a damp cloth or shampoo using proprietary upholstery shampoo.

\* Tested in accordance with BS EN 14465. Please note that seam performance is dependent on seam construction and needle and thread type. We recommend that appropriate sewing advice be taken.

**Note:** Batch to batch variations in shade may occur within commercial tolerances. We reserve the right to alter technical specifications without notice. The Unregistered Design Rights and the Copyright in all designs are the exclusive property of Camira Fabrics Limited.

### D

#### Zusammensetzung

60% Polypropylen, 30% Wolle,  
10% Viskose

#### Breite

130cm nutzbare Breite

#### Gewicht

360g/m2 ±5% (470g/ld.M ±5%)

#### \*Scheuerfestigkeit

5 Jahre Garantie / 90,000 Martindale Scheuertouren (Details auf Anfrage)

#### Feuersicherung

BS EN 1021 - 1:2006 (Zigarettestest)  
BS EN 1021 - 2:2006 (Streichholztest)  
BS 7176:2007 Low Hazard

*Bemerkung: Schwerentflammbarkeit hängt von verwendetem Schaum ab.*

#### \*Lichtechtheit

5 (ISO 105 - B02:2013)

#### \*Reibechtheit

Nass: 4, Trocken: 4 (ISO 105 - X12:2002)

#### Reinigung

Regelmässig staubsaugen. Dazu mit einem feuchten Tuch abwischen, oder mit einem speziellen Polsterschaum behandeln.

\* Wurde nach BS EN 14465 getestet. Eine optimale Nahtausreissfestigkeit hängt von der Nahtfahne, der verwendeten Nadel und dem Näh-Garn ab. Wir empfehlen daher Nähveruche durchzuführen.

**Wichtig:** Handelsübliche Farbabweichungen können auftreten und berechnen nicht zur Reklamation. Wir behalten uns die Änderung technischer Spezifikationen vor. Die registrierten und nicht registrierten Urheberrechte der Dessinierungen sind ausschliessliches Eigentum der Camira Fabrics Limited.

### F

#### Composition

60% Polypropylène, 30% Laine,  
10% Viscose

#### Largeur

130cm minimum

#### Poids

360g/m2 ±5% (470g/m.l ±5%)

#### \*Résistance à l'abrasion

Garantie de 5 ans / 90,000 Martindale tours (renseignements complémentaires disponibles)

#### Flammabilité

BS EN 1021 - 1:2006 (cigarette)  
BS EN 1021 - 2:2006 (allumette)  
BS 7176:2007 Low Hazard

*Notez: Réaction au feu dépend de la mousse utilisée.*

#### \*Solidité à la lumière

5 (ISO 105 - B02:2013)

#### \*Solidité au Frottement

Mouillé: 4, Sec: 4 (ISO 105 - X12:2002)

#### Nettoyage

Aspirer régulièrement. Essuyer avec une étoffe humide ou nettoyer à l'aide d'un produit approprié pour tissus d'ameublement.

\* Testé selon la norme BS EN 14465. Veuillez noter que la performance du joint dépend de sa construction ainsi que de l'aiguille et du type de fil utilisés.

**Remarque:** une variation de couleurs peut provenir (commerciallement tolérable). Nous réservons le droit de changer les spécifications techniques sans préavis. Les Droits de Conception non-enregistrés et les droits d'auteur de tous les motifs sont la propriété exclusive de Camira Fabrics Limited.

### ES

#### Composición

60% Polipropileno, 30% Lana,  
10% Viscosa

#### Ancho

130cm mínimo

#### Peso

360g/m2 ±5% (470g/lin.m ±5%)

#### \*Resistencia a la abrasión

Garantía de uso 5 años / 90,000 Martindale ciclos (más información disponible bajo consulta)

#### Inflamabilidad

BS EN 1021 - 1:2006 (cigarillo)  
BS EN 1021 - 2:2006 (cerilla)  
BS 7176:2007 Low Hazard

*Condiciones ignífugas dependientes del tipo de foam utilizado.*

#### \*Solidez a la luz

5 (ISO 105 - B02:2013)

#### \*Solidez al rozamiento

Húmedo: 4, Seco: 4 (ISO 105 - X12:2002)

#### Limpieza

Cada tintada puede tener pequeñas variaciones en el tono dentro de las tolerancias comerciales aceptadas.

\* Probado de acuerdo con la norma BS EN 14465. Tenga en cuenta que el rendimiento de la costura depende de la construcción de la costura, además de la aguja y del tipo de rosca. Le recomendamos que se aconsejen para coser la costura.

**Nota:** las variaciones de lote a lote en la sombra se puede producir dentro de tolerancias comerciales. Nos reservamos el derecho a efectuar modificaciones técnicas sin previo aviso. Los derechos sobre los diseños no registrados y los derechos de autor en todos los diseños son propiedad exclusiva de Camira Fabrics Limited.

# camira

style with substance

[www.camirafabrics.com](http://www.camirafabrics.com)

# Advantage



Task seating



Cigarette & Match



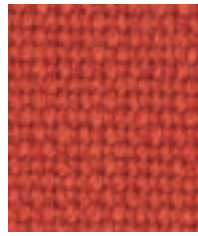
Year guarantee

Please note that we do not recommend selection of fabric ranges and colours via this method. Colours can vary from screen to screen and may not a true representation of the actual colour. Swatch cards or samples can be provided on request for your consideration.

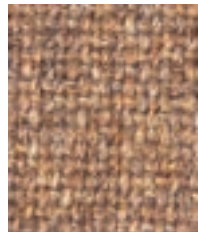
**Advantage**

www.camirafabrics.com/samples

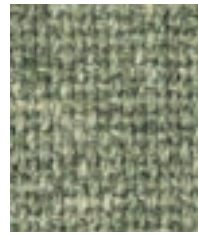
Please note that we do not recommend selection of fabric ranges and colours via this method. Colours can vary from screen to screen and may not a true representation of the actual colour. Swatch cards or samples can be provided on request for your consideration.



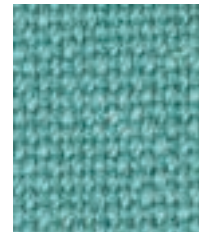
**Cinnamon**  
AD111



**Sandvale**  
AD016



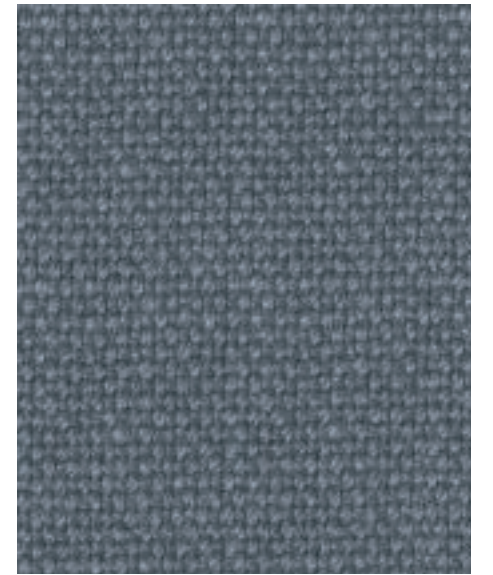
**Leaf**  
AD030



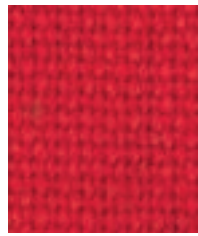
**Kingfisher**  
AD122



**Sea Blue**  
AD017



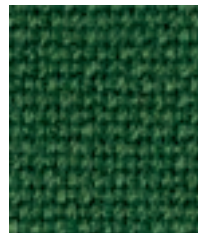
**Granite**  
AD009



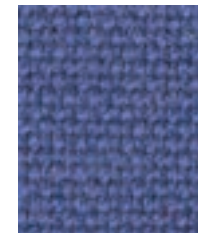
**Red**  
AD014



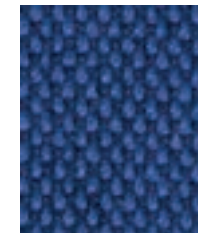
**Tawny**  
AD098



**Shamrock**  
AD121



**Adriatic**  
AD001



**Trent**  
AD214



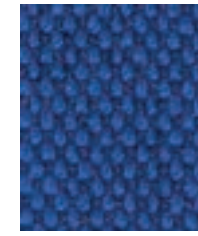
**Cranberry**  
AD005



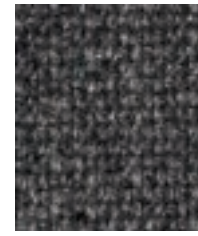
**Oasis**  
AD117



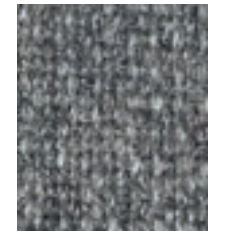
**Turquoise**  
AD027



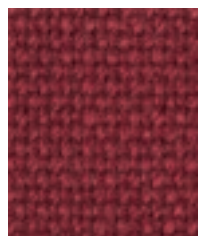
**Hobbit**  
AD213



**Pewter**  
AD072



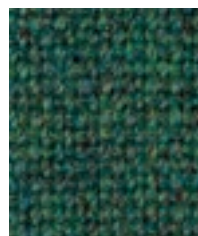
**Mineral**  
AD010



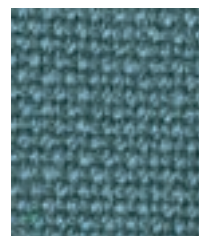
**Wine**  
AD020



**Aqua**  
AD002



**Persian**  
AD101



**Riviera**  
AD123



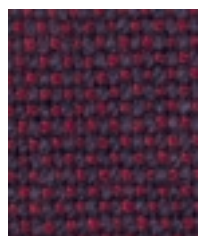
**Largo**  
AD112



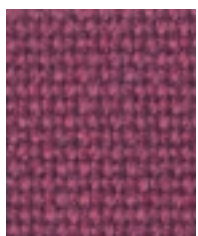
**Purple**  
AD118



**Graphite**  
AD066



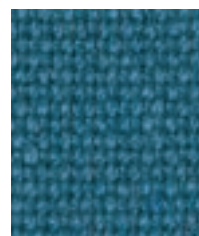
**Damson**  
AD093



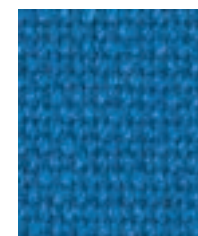
**Raspberry**  
AD127



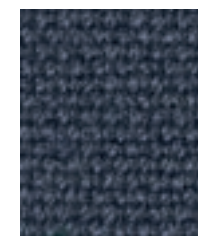
**Teal**  
AD120



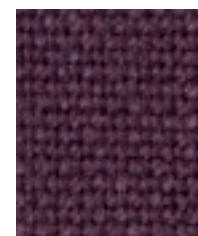
**Delta Blue**  
AD026



**Clipper**  
AD126



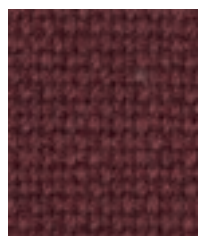
**Fjord**  
AD125



**Beetroot**  
AD116



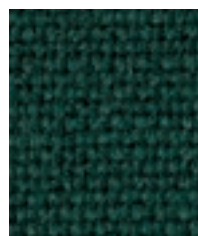
**Charcoal**  
AD028



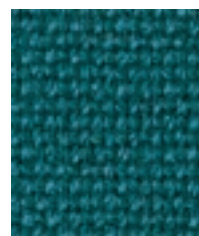
**Fox**  
AD119



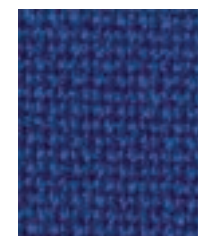
**Grape**  
AD029



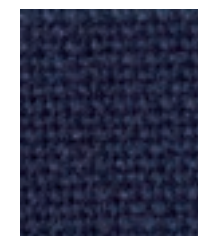
**Aztec**  
AD113



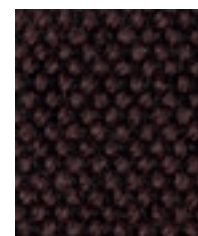
**Trident**  
AD124



**Cobalt**  
AD004



**Nightshade**  
AD011



**Peat**  
AD131



**Black**  
AD055